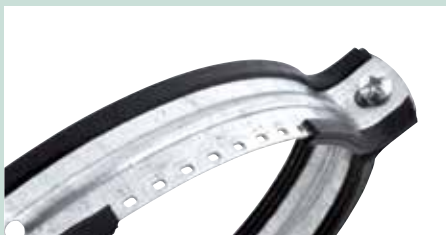


BIS Aero®



The new generation of spiral duct clamps

- Rubber lining remains securely attached when sliding spiral duct through clamp
- Clamp closes quickly and easily
- Effortless installation of spiral ducts

BIS Aero®

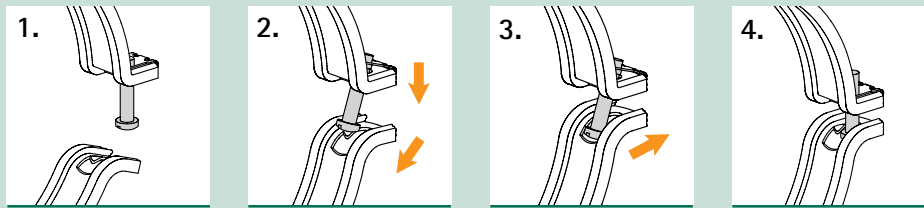
The BIS Aero® is a unique clamp. The rubber lining is formed around and through the steel band. It is conjoined with the steel and will not come off when sliding the spiral duct through the clamp.

The newly designed and patented quick locking system enables safe and easy installation of spiral ducts and venting.

The range covers all common spiral duct sizes from 2" up to and including 12".



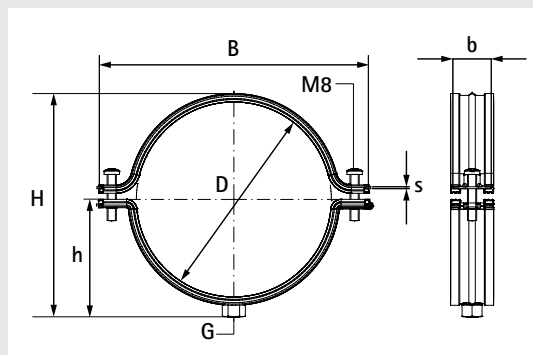
Patented quick locking system



$D \geq 450$: Locking 2 hexagon head bolts with nut.

Technical data

- Pipe clamp made of steel, pre-galvanized
- Noise insulating lining made of TPE rubber, black



Item Number	D (inches)	B (inches)	b (inches)	G (inches)	H (inches)	h (inches)	s (mm)	Fa,z (lbs)	Items per pkg
CR4115080	3	5.28	1	3/8	3.31	2.31	1.25	160	25
CR4115100	-	6.10	1	3/8	4.53	2.52	1.25	160	25
CR4115125	5	7.05	1	3/8	5.47	2.99	1.25	160	20
CR4115150	6	8.07	1	3/8	6.56	3.46	1.25	160	20
CR4115160	-	8.46	1	3/8	6.89	3.66	1.25	160	20
CR4115200	8	10.04	1	3/8	8.46	4.49	1.25	160	20
CR4115250	10	12.05	1	3/8	10.43	5.43	1.25	160	20
CR4115300	12	14.02	1	3/8	12.68	6.46	1.25	160	20
CR4115315	-	14.61	1	3/8	13.07	6.77	1.25	160	20
BIS Bifix® 413 Clamp:									
CR4135063	2	4.90	1	3/8	3.10	1.70	1.25	160	25
CR4135112	4	6.22	1	3/8	5.16	2.76	1.25	160	20

The max. allowed load (Fa,z) is calculated using specific statistical methods related to the breaking load, taking into account a deflection of 1,5 mm or 2% of the maximum nominal clamp diameter.

United States of America Canada

Walraven, Inc.
2605 East Oakley Park Road
Suite B
Walled Lake (Detroit), MI 48390 (US)
Toll free +1 800 610 5056
Phone +1 248 374 3100
Fax +1 248 374 3232
info@walraven.com

walraven.com

Your wholesaler: