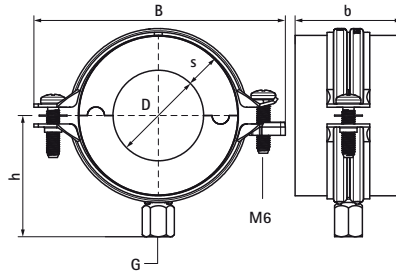
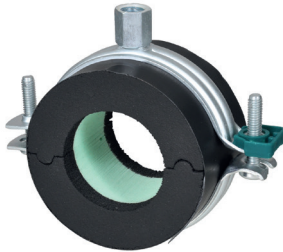


## Walraven BISOFIX® E13 (M8/M10)

(D0505)

for insulated pipes



### Features & benefits

- insulated pipe support with pipe clamp Walraven Bifix® G2
- clamp with quick locking system
- for fixing of thermal isolated pipe of steel, copper or stainless steel
- vapour proof glueing to pipe insulation
- when installing the pipe support, always align the contact areas of the insulation shells horizontally (to prevent tensile and pressure forces)
- with self-adhesive strip for easy closing of pipe support
- material: steel clamp; pipe support made of PIR foam (core), synthetic rubber (sides) and a vapour-proof layer of black PVC
- does not contain CFC, HCFC, formaldehyde or cadmium
- excellent thermal and mechanical properties
- product is part of the Walraven UltraProtect® 1000 system
- suitable for in- and outdoor applications
- Walraven Bifix® G2 Clamp: surface protection: stands min. 1,000 hours salt spray test (max. 5% red rust) according to ISO 9227
- working temperature from -45 °C to +105 °C

Product Number	Pipe Diameter Imperial	DN	Connection Thread	Total Height	Total Width	Total Length	Insulation Thickness	Maximum Allowed Load Faz
Reference letter	D	D	G	H	W	L	Is	Fa,z
Unit description	"			mm	mm	mm	mm	N
2210042	1¼	DN 32	M8/M10	98	118	50	16.3	150
2210048	1½	DN 40	M8/M10	103	125	50	16	225