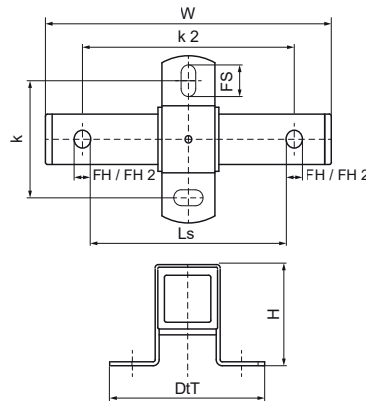
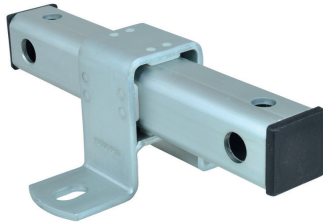


Walraven Expansion Guide Assembly (BUP1000)

(E1040)

fixing with sliding assemblies



Features & benefits

- stable support for accommodation of pipe thermal expansion or contraction
- fix directly on the building structure or in combination with rail systems
- suitable for ceiling mounting (suspended) and floor mounting (standing mounted)
- tapped with different sized threads on opposing faces
- a variety of connection possibilities, can be combined with Bifix® G2 or HD1501 pipe clamps etc.
- material: metal parts made of steel; plastic parts made of PE
- product is part of the Walraven UltraProtect® 1000 system
- suitable for in- and outdoor applications
- stands min. 1,000 hours salt spray test (max. 5% red rust) according to ISO 9227



Product Number	VVS Number	Total Height	Total Width	Total Depth	Fixing Hole	Fixing Hole 2	Fixing Slot	Heart To Heart Distance	Heart To Heart Distance 2	Slide Distance	Maximum Allowed Load Faz
<i>Reference letter</i>		<i>H</i>	<i>W</i>	<i>DtT</i>	<i>FH</i>	<i>FH 2</i>	<i>FS</i>	<i>k</i>	<i>k 2</i>	<i>Ls</i>	<i>Fa,z</i>
<i>Unit description</i>		<i>mm</i>	<i>mm</i>	<i>mm</i>	<i>mm</i>	<i>mm</i>	<i>mm</i>	<i>mm</i>	<i>mm</i>	<i>mm</i>	<i>N</i>
6668813	018049733	90	255	146	13	17	20x13	100	200	120	7,500