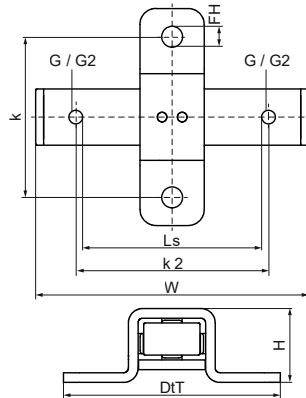
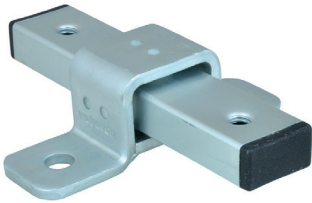


Walraven Expansion Guide Assembly Metric (BUP1000)

(E1041)

fixing with sliding assemblies



Features & benefits

- stable support for accommodation of pipe thermal expansion or contraction
- fix directly on the building structure or in combination with rail systems
- suitable for ceiling mounting (suspended) and floor mounting (standing mounted)
- tapped with different sized threads on opposing faces
- a variety of connection possibilities, can be combined with Bifix® G2 or HD1501 pipe clamps etc.
- material: metal parts made of steel; plastic parts made of PE
- product is part of the Walraven UltraProtect® 1000 system
- suitable for in- and outdoor applications
- stands min. 1,000 hours salt spray test (max. 5% red rust) according to ISO 9227

Product Number	VVS Number	Connection Thread	Connection Thread 2	Total Height	Total Width	Total Depth	Fixing Hole	Heart To Heart Distance	Heart To Heart Distance 2	Slide Distance	Maximum Allowed Load Faz
<i>Reference letter</i>		G	G2	H	W	DtT	FH	k	k 2	Ls	Fa,z
<i>Unit description</i>				mm	mm	mm	mm	mm	mm	mm	N
6668612	018066840	M10	M12	46	170	135	13	100	120	60	1,500