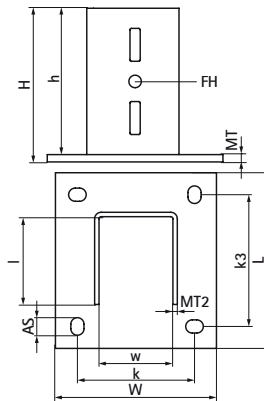
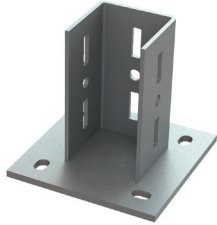


## Walraven Maxx Base Plate

(H20511)

to connect Maxx profiles to wall, floor or ceilings



### Features & benefits

- U-saddle welded on large base plate
- for connecting Maxx profiles to wall, floor or ceiling
- slots are compatible with mounting profiles
- CO<sub>2</sub> welded
- material: base plate made of steel (type S275); U-part made of steel (type S235)
- hot dip galvanized

Product Number	VVS Number	For Rail Type	Total Height	Total Width	Total Length	Width	Height	Length	Heart To Heart Distance	Heart To Heart Distance 3	Anchoring Slot	Fixing Hole	Material Thickness	Material Thickness 2	Maximum Allowed Load Faz
Reference letter			H	W	L	w	h	l	k	k 3	AS	FH	MT	MT2	Fa,z
Unit description			mm	mm	mm	mm	mm	mm	mm	mm	mm	mm	mm	mm	N
6581818	018041158	80x80	210	185	185	81	200	80	130	130	25x14	17	10.00	5	12,230
6581820	018041161	100x100	210	220	220	101	200	100	160	160	24x18	17	10.00	6	17,460
6581821	018041162	100x120	210	220	240	101	200	120	160	180	24x18	17	10.00	6	19,640