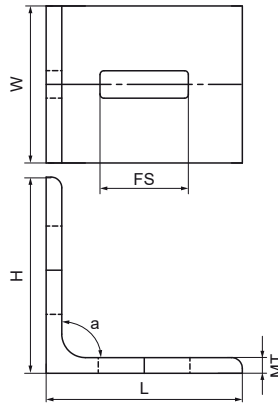
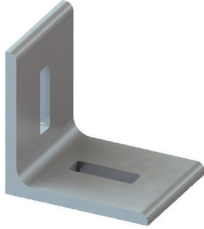


## Walraven Maxx Profile Connector 90°

(H20517)

to make Maxx rail fabrications



### Features & benefits

- 2-hole connector for Maxx profiles
- made of L-steel for extra stability
- material: steel S235JR
- hot dip galvanized

Product Number	VVS Number	For Rail Type	Angle	Total Height	Total Width	Total Length	Material Thickness	Fixing Slot	Torque Moment For Installation	Maximum Allowed Load Faz	Maximum Allowed Load Fax
<i>Reference letter</i>			<i>a</i>	<i>H</i>	<i>W</i>	<i>L</i>	<i>MT</i>	<i>FS</i>	<i>Tinst.</i>	<i>Fa,z</i>	<i>Fa,x</i>
<i>Unit description</i>			°	mm	mm	mm	mm	mm	Nm	N	N
6681010	018042371	80x80	90	100	80	100	8.00	45x14	75	14,500	5,000