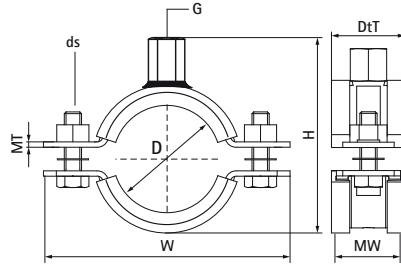


Walraven Stainless Steel Heavy Duty Clamp with Lining (M12, M16)

(M1105)

for stainless steel and plastic pipes



Features & benefits

- two-part clamp with two locking bolts
- heavy design
- with CO₂ welded connection nut
- material: stainless steel 1.4401 (A4) - EN 10088, AISI 316
- noise insulating lining, EPDM rubber, black
- also available on request: sound insulating lining of silicone rubber (reddish brown), heat resistant up to +200 °C (A 35 15)
- with sound insulating lining (acc. DIN 4109), age resistant, for temperatures -30 °C up to +110 °C



Product Number	VVS Number	DN	Pipe Diameter Imperial	Connection Thread	Total Height	Total Width	Total Depth	Material Width	Material Thickness	Screw Size	Maximum Allowed Load Faz	Approvals
<i>Reference letter</i>		<i>D</i>	<i>D</i>	<i>G</i>	<i>H</i>	<i>W</i>	<i>DtT</i>	<i>MW</i>	<i>MT</i>	<i>ds</i>	<i>Fa,z</i>	
<i>Unit description</i>			"		mm	mm	mm	mm	mm		N	
33177213	018017286	-	-	M12	255	315	44	40	4.00	M12	3,800	ITB (KOT), EPD