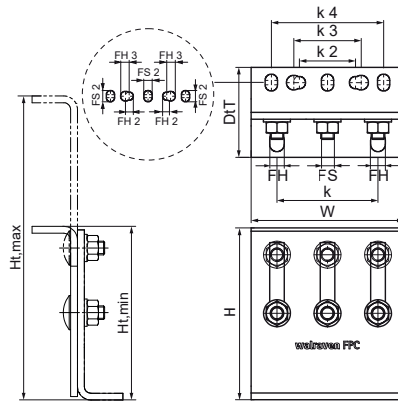


Walraven Stainless Steel Fixpoint Console FPC

(M1902)

for fixing point assembly



Features & benefits

- flexible use console module for high forces (depending on the situation, detailed design by technical service)
- can be used as a pipe connection point in conjunction with 2 or 3 heavy-duty clamps type HD700 or HD500 Black
- tightening torque 75 Nm for the console fixing screws
- suitable for in- and outdoor applications
- material: stainless steel A4 (1.4401/ AISI 316)



| Product Number | Minimum Height | Maximum Height | Maximum Allowed Load Faz | Maximum Allowed Load Fay | Maximum Allowed Load Fax | Fixing Slot | Fixing Hole | Heart To Heart Distance | Fixing Slot 2 | Fixing Hole 2 | Fixing Hole 3 | Heart To Heart Distance 2 | Heart To Heart Distance 3 | Heart To Heart Distance 4 | Total Width | Total Height | Total Depth |
|------------------|----------------|----------------|--------------------------|--------------------------|--------------------------|-------------|-------------|-------------------------|---------------|---------------|---------------|---------------------------|---------------------------|---------------------------|-------------|--------------|-------------|
| Reference letter | Ht,min | Ht,max | Fa,z | Fa,y | Fa,x | FS | FH | k | FS 2 | FH 2 | FH 3 | k 2 | k 3 | k 4 | W | H | DtT |
| Unit description | mm | mm | N | N | N | mm | mm | mm | mm | mm | mm | mm | mm | mm | mm | mm | mm |
| 6697206 | 153 | 268 | 14,300 | 11,500 | 3,200 | 15x13 | 13 | 90 | 15x11 | 11 | 13 | 50 | 60 | 100 | 136 | 153 | 86.5 |