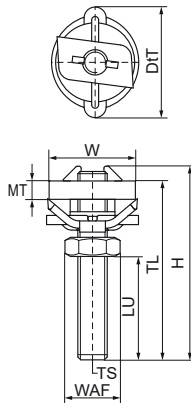


Walraven RapidRail® Stainless Steel Hammerfix

(M2925)

for quick connection of clamps



Features & benefits

- slide nut with stud bolt, washer and Walraven RapidRail® spring
- ready-to-use pre-assembled for a quick fixing, and retains assembly in place before final tightening
- material: metal parts made of stainless steel 1.4401 (AISI 316); spring(s) made of POM (polyoxymethylene), blue

Product Number	VVS Number	For Rail Type	Thread Size	Thread Length	Usable Length	Material Thickness	Width Across Flats	Torque Moment For Installation	Maximum Allowed Load Faz	Total Height	Total Width	Total Depth
Reference letter			TS	TL	LU	MT	WAF	T _{inst.}	F _{a,z}	H	W	DtT
Unit description				mm	mm	mm	mm	Nm	N	mm	mm	mm
6527062	018065003	30x15, 30x30	M6	25	10.2	4.00	10	7.5	2,000	29	29	25
6527084	018048408	30x15, 30x30	M8	40	23	5.00	13	10	2,700	40	29	29
6527088	018065108	30x15, 30x30	M8	80	63	5.00	13	10	2,700	80	29	29
6527094	018065204	30x15, 30x30	M10	40	21	5.00	17	10	2,900	40	29	29
6527098	018065208	30x15, 30x30	M10	80	63	5.00	17	10	2,900	80	29	29