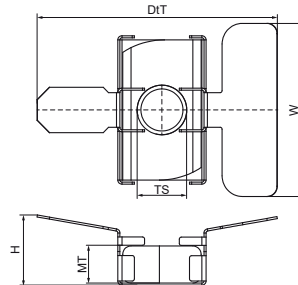
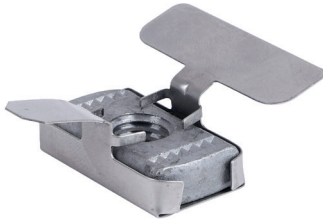


Walraven Maxx Wingnut

(H20523)

for connecting clamps and brackets to Maxx Heavy Rail Profiles



Caractéristiques

- patented slide nut for connecting clamps, sliders or RapidStrut® Rails to Maxx Profiles
- advised to be used with threaded rods M12, washers 40mm and hexagon nuts M12
- to be used with thread adaptors for connecting clamps M16 or 1/2"
- material: slide nut made from steel 1.0332; aid tray made from stainless steel 1.4301
- slide nut: hot dip galvanized

Numéro du produit	Pour le type de rail	Taille du filet	Epaisseur du matériau	Moment du couple pour l'installation	Charge maximale autorisée Fax	Charge maximale autorisée Faz	Hauteur totale	Largeur totale	Profondeur totale
Code article		TS	MT	T _{inst.}	F _{0,x}	F _{0,z}	H	W	DtT
Unité			mm	Nm	N	N	mm	mm	mm
651867112	80x80, 100x100, 100x120, 100x150	M12	9,00	50	2 100	11 400	17	58,27	42