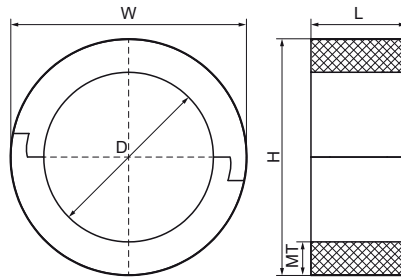


Walraven BISOFIX® PIR20

(D0350)

for insulated pipes



Features & benefits

- for combination with rigid foam insulation
- cover joints with aluminium tape
- does not contain CFC, HCFC, formaldehyde or cadmium
- fire class B2
- PIR density for $D < 110\text{mm} = 80\text{kg/m}^3$
- PIR density for $D > 110\text{mm} = 120\text{kg/m}^3$
- thermal conductivity lambda (approx. value): 0.30 W/(mK)
- temperature range $-45\text{ °C} - +105\text{ °C}$



Product Number	Outside Pipe Diameter	DN	Total Height	Total Width	Total Length	Material Thickness	Operating Temperature	Maximum Allowed Load Faz
Reference Letter	D	D	H	W	L	MT	CEL	F _{a,z}
Unit description	mm		mm	mm	mm	mm		N
I20000012	12		52	52	75	20.00	-45 - 105	120
I20000015	15 - 16		55	55	75	20.00	-45 - 105	160
I20000018	17.2 - 18	DN 10	58	58	75	20.00	-45 - 105	170
I20000020	20		60	60	75	20.00	-45 - 105	180
I20000022	21.3 - 22	DN 15	62	62	75	20.00	-45 - 105	180
I20000025	25		65	65	75	20.00	-45 - 105	190
I20000028	26.9 - 28	DN 20	68	68	75	20.00	-45 - 105	200
I20000032	32		72	72	75	20.00	-45 - 105	210
I20000034	33.7 - 35		75	75	75	20.00	-45 - 105	220
I20000040	40		80	80	75	20.00	-45 - 105	260
I20000042	42.4	DN 32	82	82	75	20.00	-45 - 105	280
I20000048	48.3	DN 40	88	88	75	20.00	-45 - 105	300
I20000050	50		90	90	75	20.00	-45 - 105	310
I20000054	54		94	94	75	20.00	-45 - 105	320
I20000057	56 - 57		97	97	75	20.00	-45 - 105	330
I20000060	60.3	DN 50	100	100	75	20.00	-45 - 105	340
I20000064	64		104	104	75	20.00	-45 - 105	350
I20000070	70		110	110	75	20.00	-45 - 105	370
I20000076	76.1	DN 65	116	116	75	20.00	-45 - 105	390
I20000089	88.9	DN 80	129	129	75	20.00	-45 - 105	430
I20000102	101.6		142	142	75	20.00	-45 - 105	450
I20000108	108		148	148	75	20.00	-45 - 105	500
I20000114	114.3	DN 100	154	154	100	20.00	-45 - 105	1,110
I20000133	133		173	173	100	20.00	-45 - 105	1,360
I20000140	139.7	DN 125	180	180	100	20.00	-45 - 105	1,410
I20000160	159 - 160		200	200	100	20.00	-45 - 105	1,520
I20000168	168.3	DN 150	208	208	100	20.00	-45 - 105	1,570
I20000219	219.1	DN 200	259	259	150	20.00	-45 - 105	1,620
I20000273	273.1		313	313	150	20.00	-45 - 105	1,670