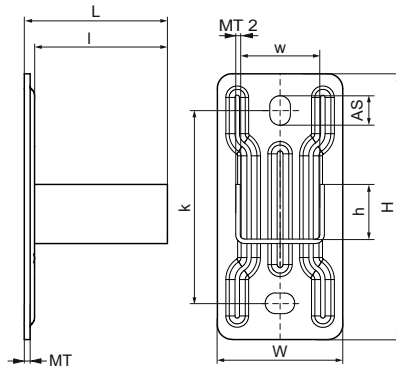


Walraven Wall Plate - 50x40

(G1520)

base foot to connect fixing rails



Features & benefits

- flexible base plate for rails
- anchoring slots at 90° to each other to simplify fixing
- with pre-assembled slide nuts for quick fixing
- material: steel
- zinc plated

| Product Number | For Rail Type | Total Height | Total Width | Total Length | Width | Height | Length | Heart To Heart Distance | Anchoring Slot | Material Thickness | Material Thickness 2 |
|-------------------------|---------------|--------------|-------------|--------------|-----------|-----------|-----------|-------------------------|----------------|--------------------|----------------------|
| <i>Reference Letter</i> | | <i>H</i> | <i>W</i> | <i>L</i> | <i>w</i> | <i>h</i> | <i>l</i> | <i>k</i> | <i>AS</i> | <i>MT</i> | <i>MT 2</i> |
| <i>Unit description</i> | | <i>mm</i> | <i>mm</i> | <i>mm</i> | <i>mm</i> | <i>mm</i> | <i>mm</i> | <i>mm</i> | <i>mm</i> | <i>mm</i> | <i>mm</i> |
| 6613300 | 50x40 | 180 | 85 | 97 | 54 | 40 | 90 | 130 | 20x14 | 4.00 | 3 |