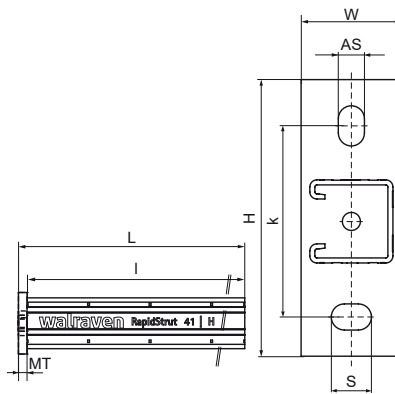
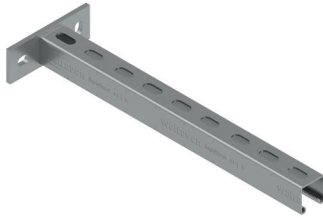


## Walraven RapidStrut® Cantilever Arm 41|H vertical (BUP1000)

(H0820)

special profile for shaft installation



### Features & benefits

- vertical welded cantilever arm for vertical pipe installations
- perfect solution for shaft situations with or without wall
- optimal utilization of the available space in shafts
- CO<sub>2</sub> welded
- inward formed flanges with serrated profile for extra grip
- material: steel 1.0226
- product is part of the Walraven Walraven UltraProtect® 1000 system
- suitable for in- and outdoor applications
- stands min. 1,000 hours salt spray test (max. 5% red rust) according to ISO 9227



| Product Number          | Type   | Length    | Total Height | Total Width | Total Length | Material Thickness | Anchoring Slot | Profile Opening | Heart To Heart Distance |
|-------------------------|--------|-----------|--------------|-------------|--------------|--------------------|----------------|-----------------|-------------------------|
| <i>Reference Letter</i> |        | <i>l</i>  | <i>H</i>     | <i>W</i>    | <i>L</i>     | <i>MT</i>          | <i>AS</i>      | <i>S</i>        | <i>k</i>                |
| <i>Unit description</i> |        | <i>mm</i> | <i>mm</i>    | <i>mm</i>   | <i>mm</i>    | <i>mm</i>          | <i>mm</i>      | <i>mm</i>       | <i>mm</i>               |
| 66084245                | 41   H | 450       | 138          | 50          | 457          | 7.00               | 20x13          | 22              | 95                      |
| 66084260                | 41   H | 600       | 138          | 50          | 607          | 7.00               | 20x13          | 22              | 95                      |
| 66084275                | 41   H | 750       | 138          | 50          | 757          | 7.00               | 20x13          | 22              | 95                      |