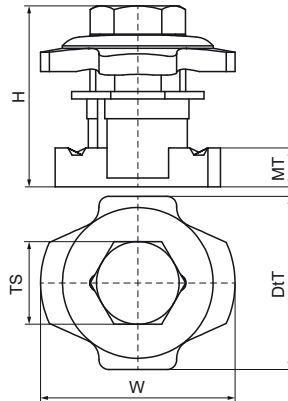
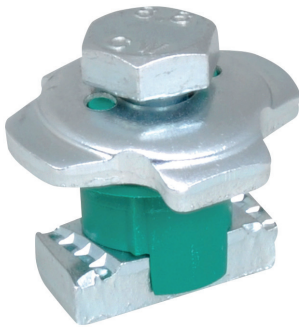


## Walraven PushStrut Button

(H2905)

for easy installation of complex rail constructions



### Features & benefits

- universal button: easily combined with all common Walraven RapidStrut® profiles and all Walraven PushStrut Connectors
- teeth with force fit connections offer more stability
- timesaving and flexible
- easy to remove and reusable
- 3D constructions due to 3D Connectors
- material: steel
- zinc plated
- The max. allowed load  $F_{a,z}$  in the table refers to rails and cantilever arms with a material thickness of 2.5 mm.
- The  $F_{a,z}$  at a thickness of 2.0 mm profile thickness = 4,500 N.
- The  $F_{a,z}$  at a thickness of 1.5 mm profile thickness = 3,500 N.

Product Number	For Rail Type	Thread Size	Material Thickness	Torque Moment For Installation	Maximum Allowed Load $F_{a,x}$	Maximum Allowed Load $F_{a,z}$	Total Height	Total Width	Total Depth
Reference Letter		TS	MT	T inst.	$F_{a,x}$	$F_{a,z}$	H	W	DtT
Unit description			mm	Nm	N	N	mm	mm	mm
66519910	41x21, 41x41, 41x51, 41x62, 41x82	M10	8.00	40	3,000	5,000	37.72	40	35.6