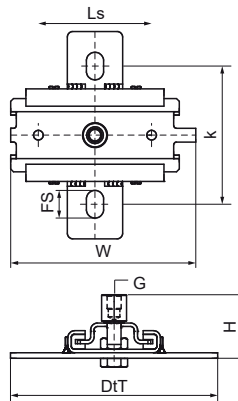
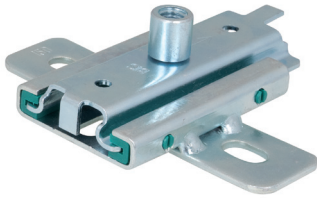


Walraven Expansion Device 1-L

(E1024)

fixing with sliding assemblies



Features & benefits

- single brackets for accommodation of pipe thermal expansion or contraction
- fix directly on the building structure or in combination with rail systems
- suitable for ceiling mounting (suspended) and floor mounting (standing mounted)
- a variety of connection possibilities, can be combined with all pipe clamps
- friction coefficient $\mu = 0.18$; Sliding friction coefficient $\mu = 0.14$
- material: metal parts made of steel 1.0332; plastic parts made of PA (polyamide) / PPS (polyphenylensulfid)
- zinc plated
- temperature resistance up to $+120\text{ }^{\circ}\text{C}$; product 6663416 withstands up to $+240\text{ }^{\circ}\text{C}$
- max. allowed load: standing = $F_{a,z}$; suspended = $F_{a,z} \cdot 2$
- not suitable for pipes $\geq \text{DN } 200$

Product Number	Connection Thread	Total Height	Total Width	Total Depth	Fixing Slot	Heart To Heart Distance	Slide Distance	Maximum Allowed Load $F_{a,z}$	Maximum Allowed Load $F_{a,z} \cdot 2$
Reference letter	G	H	W	DtT	FS	k	Ls	$F_{a,z}$	
Unit description		mm	mm	mm	mm	mm	mm	N	N
6663412	M10/M12	46	134	150	20x12,5	100	80	2,300	2,300
6663416	M12/M16	57	165	188	20x12,5	157	120	5,000	9,000