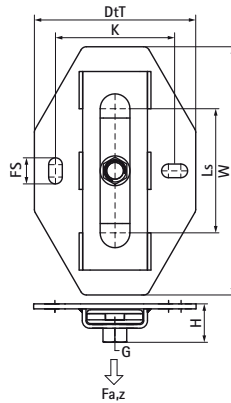
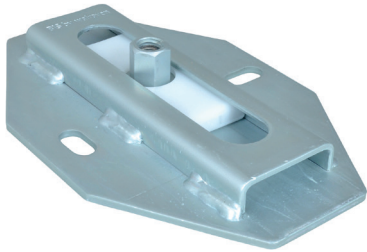


Walraven Expansion Device (BUP1000)

(E1035)

fixing with sliding assemblies



Features & benefits

- single support for accommodation of pipe thermal expansion or contraction
- secure parts ensure mechanism will not slide out
- fix directly on the building structure or in combination with rail systems
- suitable for ceiling mounting (suspended) and floor mounting (standing mounted)
- very low installation height, useful in small spaces
- a variety of connection possibilities, can be combined with all pipe clamps
- material: metal parts made of steel; plastic parts made of POM (polyoxymethylene)
- friction coefficient $\mu = 0.18$; Sliding friction coefficient $\mu = 0.14$
- product is part of the Walraven UltraProtect® 1000 system
- suitable for in- and outdoor applications
- stands min. 1,000 hours salt spray test (max. 5% red rust) according to ISO 9227
- temperature resistance up to +120 °C
- tested for fire safety according to EN 1363-1



Product Number	Connection Thread	Total Height	Total Width	Total Depth	Fixing Slot	Heart To Heart Distance	Slide Distance	Maximum Allowed Load Fa,z
Reference letter	G	H	W	DtT	FS	k	Ls	Fa,z
Unit description		mm	mm	mm	mm	mm	mm	N
6668310	M8/M10	31	200	130	21x11	96	100	3,500
6668312	M10/M12	33	200	130	21x11	96	100	4,800
6668316	M16	31	200	130	21x11	96	100	4,800