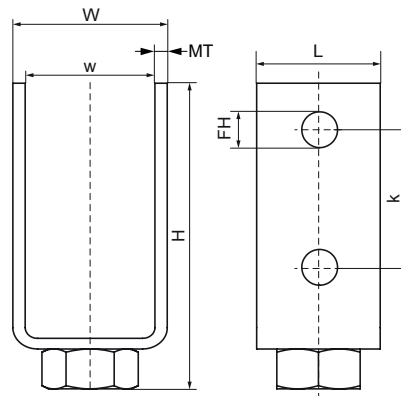
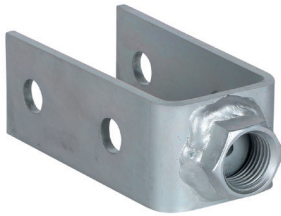


Walraven RapidStrut® Adapter for HD clamps (BUP1000)

(H1603)

to connect HD clamps on top of cantilever arms



Features & benefits

- adapter plate to connect HD clamps 1/2" to RapidStrut Cantilever arms
- suitable for RapidStrut Cantilever Arms Type 41|H and 41|M
- to create standing support for pipes
- suitable for indoor and outdoor use
- material: steel 1.0332
- product is part of the Walraven BIS UltraProtect® 1000 system
- suitable for in- and outdoor applications
- stands min. 1,000 hours salt spray test (max. 5% red rust) according to ISO 9227

| Product Number | For Rail Type | Total Height | Total Width | Total Length | Material Thickness | Width | Fixing Hole | Heart To Heart Distance | Torque Moment For Installation |
|-------------------------|-----------------------------------|--------------|-------------|--------------|--------------------|-----------|-------------|-------------------------|--------------------------------|
| <i>Reference letter</i> | | <i>H</i> | <i>W</i> | <i>L</i> | <i>MT</i> | <i>w</i> | <i>FH</i> | <i>k</i> | <i>T_{inst.}</i> |
| <i>Unit description</i> | | <i>mm</i> | <i>mm</i> | <i>mm</i> | <i>mm</i> | <i>mm</i> | <i>mm</i> | <i>mm</i> | <i>Nm</i> |
| 66588290 | 41x21, 41x41, 41x51, 41x62, 41x82 | 115 | 50 | 40 | 4.00 | 40 | 13 | 50 | 30 |