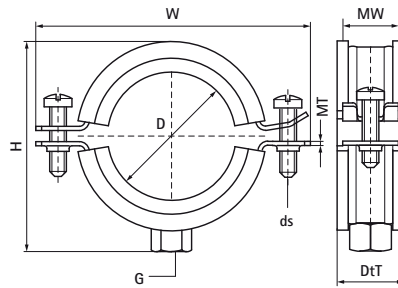


Walraven BISMAT® 2000 (M8/10) 2-screw

(A0524)

for steel, copper, cast iron and plastic (multilayer) pipe



Features & benefits

- two-screw clamp
- with Walraven BISMAT® quick locking system
- material: steel
- zinc plated
- sound insulating lining according DIN 4109
- noise reduction according to ISO 3822-1 up to 23 dB(A)
- tested for fire safety



Product Number	DN	Pipe Diameter Imperial	Connection Thread	Total Height	Total Width	Total Depth	Material Width	Material Thickness	Screw Size	Maximum Allowed Load Faz	Approvals
Reference letter	D	D	G	H	W	DtT	MW	MT	ds	F _{0,z}	
Unit description	"			mm	mm	mm	mm	mm		N	
3403064	DN 50	2	M8/M10	92	107	29	23	2.00	M6	520	RAL-GZ 656, ITB (KOT), CE, ETA, ISO 3822-1, RAL-GZ 655/B, EPD
3403070	-	-	M8/M10	100	115	29	23	2.00	M6	520	RAL-GZ 656, ITB (KOT), CE, ETA, ISO 3822-1, RAL-GZ 655/B, EPD
3403080	DN 65	2½	M8/M10	110	125	29	23	2.00	M6	520	RAL-GZ 656, ITB (KOT), CE, ETA, ISO 3822-1, RAL-GZ 655/B, EPD
3403091	DN 80	3	M8/M10	122	136	31	25	2.50	M6	935	RAL-GZ 656, ITB (KOT), CE, ETA, ISO 3822-1, RAL-GZ 655/B, EPD
3403105	-	-	M8/M10	137	151	31	25	2.50	M6	935	RAL-GZ 656, ITB (KOT), CE, ETA, ISO 3822-1, RAL-GZ 655/B, EPD
3403114	DN 100	4	M8/M10	145	159	31	25	2.50	M6	935	RAL-GZ 656, ITB (KOT), CE, ETA, ISO 3822-1, RAL-GZ 655/B, EPD
3403119	-	-	M8/M10	150	164	31	25	2.50	M6	935	ITB (KOT), CE, ETA, ISO 3822-1, RAL-GZ 655/B, EPD
3403125	-	-	M8/M10	158	172	31	25	2.50	M6	935	ITB (KOT), CE, ETA, ISO 3822-1, RAL-GZ 655/B, EPD
3403141	DN 125	5	M8/M10	172	187	31	25	2.50	M6	935	ITB (KOT), CE, ETA, ISO 3822-1, RAL-GZ 655/B, EPD