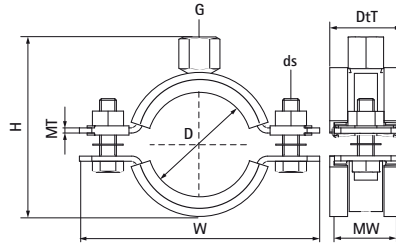


Walraven Heavy Duty Clamp HD1501 (M8/10) (BUP1000)

(A1004)

for metal pipes



Features & benefits

- two-part clamp with two locking bolts
- heavy design
- bolts secured with anti-loss washer
- with CO₂ welded connection nut
- material: steel
- surface protection:
- product is part of the Walraven BIS UltraProtect® 1000 system
- suitable for in- and outdoor applications
- stands min. 1,000 hours salt spray test (max. 5% red rust) according to ISO 9227
- sound insulating lining according DIN 4109
- noise reduction according to ISO 3822-1 up to 18 dB(A)
- tested for fire safety



Product Number	RSK Number	DN	Pipe Diameter Imperial	Connection Thread	Total Height	Total Width	Total Depth	Material Width	Material Thickness	Screw Size	Maximum Allowed Load Faz	Approvals
Reference letter		D	D	G	H	W	DtT	MW	MT	ds	Fa,z	
Unit description			"		mm	mm	mm	mm	mm		N	
33138019	3809590	DN 10	3/8	M8/M10	53	82	32	30	2.50	M8	1,500	CE, ETA, ISO 3822-1, RAL-GZ 655/B, RAL-GZ 656, ITB (KOT), EPD
33138023	3809591	DN 15	1/2	M8/M10	57	85	32	30	2.50	M8	1,500	CE, ETA, ISO 3822-1, RAL-GZ 655/B, RAL-GZ 656, ITB (KOT), EPD
33138029	3809592	DN 20	3/4	M8/M10	63	91	32	30	2.50	M8	1,500	CE, ETA, ISO 3822-1, RAL-GZ 655/B, RAL-GZ 656, ITB (KOT), EPD
33138035	3809593	DN 25	1	M8/M10	69	98	32	30	2.50	M8	1,500	CE, ETA, ISO 3822-1, RAL-GZ 655/B, RAL-GZ 656, ITB (KOT), EPD
33138045	3809594	DN 32	1 1/4	M8/M10	79	109	32	30	2.50	M8	1,500	CE, ETA, ISO 3822-1, RAL-GZ 655/B, RAL-GZ 656, ITB (KOT), EPD
33138051	3809595	DN 40	1 1/2	M8/M10	85	114	32	30	2.50	M8	1,500	CE, ETA, ISO 3822-1, RAL-GZ 655/B, RAL-GZ 656, ITB (KOT), EPD
33138059	3809596	-	-	M8/M10	92	121	32	30	2.50	M8	1,500	CE, ETA, ISO 3822-1, RAL-GZ 655/B, RAL-GZ 656, ITB (KOT), EPD
33138064	3809597	DN 50	2	M8/M10	98	129	32	30	2.50	M8	1,500	CE, ETA, ISO 3822-1, RAL-GZ 655/B, RAL-GZ 656, ITB (KOT), EPD