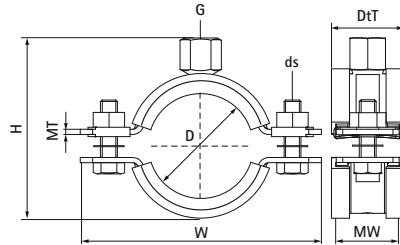


## Walraven Heavy Duty Clamp HD1501 White (M8/10) (BUP1000)

(A10041)

for metal pipes



### Features & benefits

- two-part clamp with two locking bolts
- up to and including 5": locking nut is captive, hidden in plastic holder
- heavy design
- bolts secured with anti-loss washer
- with CO<sub>2</sub> welded connection nut
- material: steel
- surface protection:
  - white (RAL 9003) epoxy powder coating (60 µm)
  - product is part of the Walraven BIS UltraProtect® 1000 system
- suitable for in- and outdoor applications
- stands min. 1,000 hours salt spray test (max. 5% red rust) according to ISO 9227
- sound insulating according DIN 4109
- tested for fire safety



Product Number	DN	Pipe Diameter Imperial	Connection Thread	Total Height	Total Width	Total Depth	Material Width	Material Thickness	Screw Size	Maximum Allowed Load Faz	Approvals
Reference letter	D	D	G	H	W	DtT	MW	MT	ds	Fa,z	
Unit description		"		mm	mm	mm	mm	mm		N	
33139023	DN 15	1/2	M8/M10	57	85	32	30	2.50	M8	1,500	CE, ETA, ISO 3822-1, EPD
33139029	DN 20	3/4	M8/M10	63	91	32	30	2.50	M8	1,500	CE, ETA, ISO 3822-1, EPD
33139035	DN 25	1	M8/M10	69	98	32	30	2.50	M8	1,500	CE, ETA, ISO 3822-1, EPD
33139045	DN 32	1 1/4	M8/M10	79	109	32	30	2.50	M8	1,500	CE, ETA, ISO 3822-1, EPD
33139051	DN 40	1 1/2	M8/M10	85	114	32	30	2.50	M8	1,500	CE, ETA, ISO 3822-1, EPD
33139059	-	-	M8/M10	92	121	32	30	2.50	M8	1,500	CE, ETA, ISO 3822-1, EPD
33139064	DN 50	2	M8/M10	98	129	32	30	2.50	M8	1,500	CE, ETA, ISO 3822-1, EPD