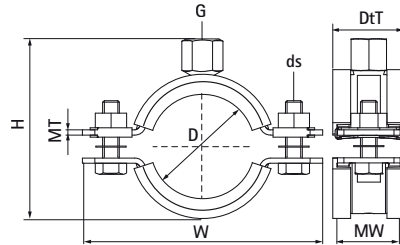


## Walraven Heavy Duty Clamp HD1501 (M10/12) (BUP1000)

(A1005)

for metal pipes



### Features & benefits

- two-part clamp with two locking bolts
- heavy design
- bolts secured with anti-loss washer
- with CO<sub>2</sub> welded connection nut
- material: steel
- surface protection:
- product is part of the Walraven BIS UltraProtect® 1000 system
- suitable for in- and outdoor applications
- stands min. 1,000 hours salt spray test (max. 5% red rust) according to ISO 9227
- sound insulating lining according DIN 4109
- noise reduction according to ISO 3822-1 up to 18 dB(A)
- tested for fire safety



Product Number	RSK Number	DN	Pipe Diameter Imperial	Connection Thread	Total Height	Total Width	Total Depth	Material Width	Material Thickness	Screw Size	Maximum Allowed Load Faz	Approvals
Reference letter		D	D	G	H	W	DeT	MW	MT	ds	Fa,z	
Unit description			"		mm	mm	mm	mm	mm		N	
33148071	3809598	-	-	M10/M12	115	137	36	30	3.00	M8	2,300	RAL-GZ 656, ITB (KOT), CE, ETA, RAL-GZ 655/B, EPD
33148078	3809600	DN 65	2½	M10/M12	122	144	36	30	3.00	M8	2,300	RAL-GZ 656, ITB (KOT), CE, ETA, RAL-GZ 655/B, EPD
33148085	3809599	-	-	M10/M12	129	151	36	30	3.00	M8	2,300	RAL-GZ 656, ITB (KOT), CE, ETA, RAL-GZ 655/B, EPD
33148092	3809601	DN 80	3	M10/M12	136	158	36	30	3.00	M8	2,300	RAL-GZ 656, ITB (KOT), CE, ETA, RAL-GZ 655/B, EPD
33148109	3809602	-	-	M10/M12	153	175	36	30	3.00	M8	2,300	RAL-GZ 656, ITB (KOT), CE, ETA, RAL-GZ 655/B, EPD
33148116	3809603	DN 100	4	M10/M12	160	182	36	30	3.00	M8	2,300	RAL-GZ 656, ITB (KOT), CE, ETA, RAL-GZ 655/B, EPD
33148133	3809604	-	-	M10/M12	177	199	32	30	3.00	M8	2,300	RAL-GZ 656, ITB (KOT), CE, ETA, RAL-GZ 655/B, EPD
33148140	3809605	DN 125	5	M10/M12	184	206	32	30	3.00	M8	2,300	RAL-GZ 656, ITB (KOT), CE, ETA, RAL-GZ 655/B, EPD
33148169	3809606	DN 150	6	M10/M12	220	255	45	38	4.00	M10	3,800	ITB (KOT), CE, ETA, RAL-GZ 655/B, EPD
33148188	3809607	-	-	M10/M12	239	274	45	38	4.00	M10	3,800	ITB (KOT), CE, ETA, RAL-GZ 655/B, EPD
33148204	3809608	-	-	M10/M12	256	291	45	38	4.00	M10	3,800	ITB (KOT), CE, ETA, RAL-GZ 655/B, EPD
33148213	3809609	-	-	M10/M12	264	299	45	38	4.00	M10	3,800	ITB (KOT), CE, ETA, RAL-GZ 655/B, EPD
33148227	3809610	DN 200	8	M10/M12	278	322	45	38	4.00	M12	3,800	ITB (KOT), CE, ETA, RAL-GZ 655/B, EPD