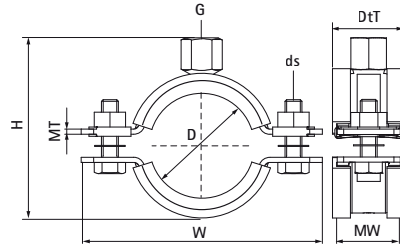


Walraven Heavy Duty Clamp HD1501 (1/2") (BUP1000)

(A1009)

for metal pipes



Features & benefits

- two-part clamp with two locking bolts
- heavy design
- bolts secured with anti-loss washer
- with CO₂ welded connection nut
- material: steel
- surface protection:
- product is part of the Walraven BIS UltraProtect® 1000 system
- suitable for in- and outdoor applications
- stands min. 1,000 hours salt spray test (max. 5% red rust) according to ISO 9227
- sound insulating lining according DIN 4109
- noise reduction according to ISO 3822-1 up to 18 dB(A)
- tested for fire safety



Product Number	DN	Pipe Diameter Imperial	Connection Thread	Total Height	Total Width	Total Depth	Material Width	Material Thickness	Screw Size	Maximum Allowed Load Faz	Approvals
Reference letter	D	D	G	H	W	DtT	MW	MT	ds	Fa,z	
Unit description	"			mm	mm	mm	mm	mm		N	
33178019	DN 10	3/8	G1/2"	48	82	32	30	2.50	M8	1,500	ITB (KOT), CE, ETA, RAL-GZ 655/B, ISO 3822-1, EPD
33178023	DN 15	1/2	G1/2"	52	85	32	30	2.50	M8	1,500	ITB (KOT), CE, ETA, RAL-GZ 655/B, ISO 3822-1, EPD
33178029	DN 20	3/4	G1/2"	58	91	32	30	2.50	M8	1,500	ITB (KOT), CE, ETA, RAL-GZ 655/B, ISO 3822-1, EPD
33178035	DN 25	1	G1/2"	65	98	32	30	2.50	M8	1,500	ITB (KOT), CE, ETA, RAL-GZ 655/B, ISO 3822-1, EPD
33178045	DN 32	1 1/4	G1/2"	75	109	32	30	2.50	M8	1,500	ITB (KOT), CE, ETA, RAL-GZ 655/B, ISO 3822-1, EPD
33178051	DN 40	1 1/2	G1/2"	81	114	32	30	2.50	M8	1,500	ITB (KOT), CE, ETA, RAL-GZ 655/B, ISO 3822-1, EPD
33178059	-	-	G1/2"	88	121	32	30	2.50	M8	1,500	ITB (KOT), CE, ETA, RAL-GZ 655/B, ISO 3822-1, EPD
33178064	DN 50	2	G1/2"	94	129	32	30	2.50	M8	1,500	ITB (KOT), CE, ETA, RAL-GZ 655/B, ISO 3822-1, EPD
33178071	-	-	G1/2"	102	137	36	30	3.00	M8	2,300	ITB (KOT), CE, ETA, RAL-GZ 655/B, ISO 3822-1, EPD
33178078	DN 65	2 1/2	G1/2"	109	144	36	30	3.00	M8	2,300	ITB (KOT), CE, ETA, RAL-GZ 655/B, ISO 3822-1, EPD
33178085	-	-	G1/2"	116	151	36	30	3.00	M8	2,300	ITB (KOT), CE, ETA, RAL-GZ 655/B, ISO 3822-1, EPD
33178092	DN 80	3	G1/2"	123	158	36	30	3.00	M8	2,300	ITB (KOT), CE, ETA, RAL-GZ 655/B, ISO 3822-1, EPD
33178109	-	-	G1/2"	140	175	36	30	3.00	M8	2,300	ITB (KOT), CE, ETA, RAL-GZ 655/B, ISO 3822-1, EPD
33178116	DN 100	4	G1/2"	147	182	36	30	3.00	M8	2,300	ITB (KOT), CE, ETA, RAL-GZ 655/B, ISO 3822-1, EPD
33178133	-	-	G1/2"	164	199	32	30	3.00	M8	2,300	ITB (KOT), CE, ETA, RAL-GZ 655/B, ISO 3822-1, EPD
33178140	DN 125	5	G1/2"	171	206	32	30	3.00	M8	2,300	ITB (KOT), CE, ETA, RAL-GZ 655/B, ISO 3822-1, EPD
33178169	DN 150	6	G1/2"	209	255	45	38	4.00	M10	3,800	ITB (KOT), CE, ETA, RAL-GZ 655/B, ISO 3822-1, EPD
33178188	-	-	G1/2"	229	274	45	38	4.00	M10	3,800	ITB (KOT), CE, ETA, RAL-GZ 655/B, ISO 3822-1, EPD
33178204	-	-	G1/2"	246	291	45	38	4.00	M10	3,800	ITB (KOT), CE, ETA, RAL-GZ 655/B, ISO 3822-1, EPD
33178213	-	-	G1/2"	254	299	45	38	4.00	M10	3,800	ITB (KOT), CE, ETA, RAL-GZ 655/B, ISO 3822-1, EPD
33178227	DN 200	8	G1/2"	267	322	45	38	4.00	M12	3,800	ITB (KOT), CE, ETA, RAL-GZ 655/B, ISO 3822-1, EPD

Walraven Heavy Duty Clamp HD1501 (1/2") (BUP1000)

(A1009)

for metal pipes

Product Number	DN	Pipe Diameter Imperial	Connection Thread	Total Height	Total Width	Total Depth	Material Width	Material Thickness	Screw Size	Maximum Allowed Load Faz	Approvals
Reference letter	D	D	G	H	W	DiT	MW	MT	ds	Fa,z	
Unit description				mm	mm	mm	mm	mm		N	
33178250	-	-	G½"	290	345	45	38	4.00	M12	3,800	ITB (KOT), CE, ETA, RAL-GZ 655/B, ISO 3822-1, EPD
33178275	DN 250	10	G½"	314	368	55	48	5.00	M12	9,200	ITB (KOT), CE, ETA, RAL-GZ 655/B, ISO 3822-1, EPD
33178325	DN 300	12	G½"	363	414	55	48	5.00	M12	9,200	ITB (KOT), CE, ETA, RAL-GZ 655/B, ISO 3822-1, EPD
33178364	DN 350	14	G½"	402	453	55	48	5.00	M12	9,200	ITB (KOT), CE, ETA, RAL-GZ 655/B, ISO 3822-1, EPD
33178408	DN 400	16	G½"	446	497	55	48	5.00	M12	9,200	ITB (KOT), CE, ETA, RAL-GZ 655/B, ISO 3822-1, EPD
33178458	DN 450	18	G½"	496	548	55	48	5.00	M12	9,200	ITB (KOT), CE, ETA, RAL-GZ 655/B, ISO 3822-1, EPD
33178509	DN 500	20	G½"	547	599	55	48	5.00	M12	9,200	ITB (KOT), CE, ETA, RAL-GZ 655/B, ISO 3822-1, EPD