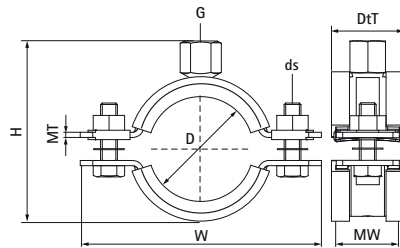


## Walraven Heavy Duty Clamp HD1501 White (1/2") (BUP1000)

(A10091)

for metal pipes



### Features & benefits

- two-part clamp with two locking bolts
- up to and including 5": locking nut is captive, hidden in plastic holder
- heavy design
- bolts secured with anti-loss washer
- with CO<sub>2</sub> welded connection nut
- material: steel
- surface protection:
  - white (RAL 9003) epoxy powder coating (60 µm)
  - product is part of the Walraven BIS UltraProtect® 1000 system
- suitable for in- and outdoor applications
- stands min. 1,000 hours salt spray test (max. 5% red rust) according to ISO 9227
- sound insulating according DIN 4109
- tested for fire safety



Product Number	DN	Pipe Diameter Imperial	Connection Thread	Total Height	Total Width	Total Depth	Material Width	Material Thickness	Screw Size	Maximum Allowed Load Faz	Approvals
Reference letter	D	D	G	H	W	DtT	MW	MT	ds	F <sub>0,z</sub>	
Unit description	"			mm	mm	mm	mm	mm		N	
33179019	DN 10	3/8	G1/2"	48	82	32	30	2.50	M8	1,500	CE, ETA, ISO 3822-1, EPD
33179023	DN 15	1/2	G1/2"	52	85	32	30	2.50	M8	1,500	CE, ETA, ISO 3822-1, EPD
33179029	DN 20	3/4	G1/2"	58	91	32	30	2.50	M8	1,500	CE, ETA, ISO 3822-1, EPD
33179035	DN 25	1	G1/2"	65	98	32	30	2.50	M8	1,500	CE, ETA, ISO 3822-1, EPD
33179045	DN 32	1 1/4	G1/2"	75	109	32	30	2.50	M8	1,500	CE, ETA, ISO 3822-1, EPD
33179051	DN 40	1 1/2	G1/2"	81	114	32	30	2.50	M8	1,500	CE, ETA, ISO 3822-1, EPD
33179059	DN 50		G1/2"	88	121	32	30	2.50	M8	1,500	CE, ETA, ISO 3822-1, EPD
33179064	DN 50	2	G1/2"	94	129	32	30	2.50	M8	1,500	CE, ETA, ISO 3822-1, EPD
33179071	-	-	G1/2"	102	137	36	30	3.00	M8	2,300	CE, ETA, ISO 3822-1, EPD
33179078	DN 65	2 1/2	G1/2"	109	144	36	30	3.00	M8	2,300	CE, ETA, ISO 3822-1, EPD
33179085	-	-	G1/2"	116	151	36	30	3.00	M8	2,300	CE, ETA, ISO 3822-1
33179092	DN 80	3	G1/2"	123	158	36	30	3.00	M8	2,300	CE, ETA, ISO 3822-1, EPD
33179109	-	-	G1/2"	140	175	36	30	3.00	M8	2,300	CE, ETA, ISO 3822-1, EPD
33179116	DN 100	4	G1/2"	147	182	36	30	3.00	M8	2,300	CE, ETA, ISO 3822-1, EPD
33179133	-	-	G1/2"	164	199	32	30	3.00	M8	2,300	CE, ETA, ISO 3822-1, EPD
33179140	DN 125	5	G1/2"	171	206	32	30	3.00	M8	2,300	CE, ETA, ISO 3822-1, EPD
33179169	DN 150	6	G1/2"	209	255	45	38	4.00	M10	3,800	ITB (KOT), CE, ETA, ISO 3822-1, EPD
33179227	DN 200	8	G1/2"	267	322	45	38	4.00	M10	3,800	ITB (KOT), CE, ETA, ISO 3822-1, EPD