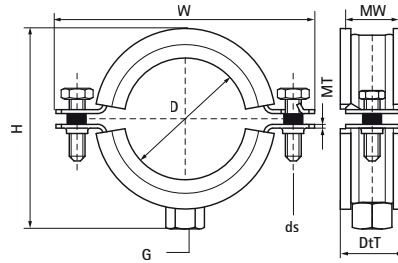


## Walraven BISMAT® SL (M10) Guidance Clamp

(A3020)

for stand pipes



### Features & benefits

- two-screw clamp
- with quick locking system
- the inside diameter of the clamp is designed for noise isolating plastic pipes (e.g. Friaphon®, As®, Raupiano®) and cast iron drain pipes
- suitable for plastic pipe
- spacer washers between the flanges guarantee a limited grip to protect the rubber from crushing
- material: steel
- zinc plated
- sound insulating lining according to DIN 4109

## EPD

Product Number	RSK Number	DN	Connection Thread	Total Height	Total Width	Total Depth	Material Width	Material Thickness	Screw Size	Approvals
<i>Reference letter</i>		<i>D</i>	<i>G</i>	<i>H</i>	<i>W</i>	<i>DtT</i>	<i>MW</i>	<i>MT</i>	<i>ds</i>	
<i>Unit description</i>				<i>mm</i>	<i>mm</i>	<i>mm</i>	<i>mm</i>	<i>mm</i>		
3408050		DN 40	M10	96	124	44	25	2.50	M8	EPD
3408070	3804045	DN 70	M10	117	154	44	25	2.50	M8	EPD
3408075	3804046	DN 70	M10	112	149	44	25	2.50	M8	EPD
3408090		DN 80	M10	143	164	44	25	2.50	M8	EPD
3408100	3804048	DN 100	M10	147	184	44	25	2.50	M8	EPD
3408125	3804049	DN 125	M10	161	199	44	25	2.50	M8	EPD
3408137	3804050	DN 125	M10	173	211	44	25	2.50	M8	EPD
3408150	3804052	DN 150	M10	196	234	44	25	2.50	M8	EPD