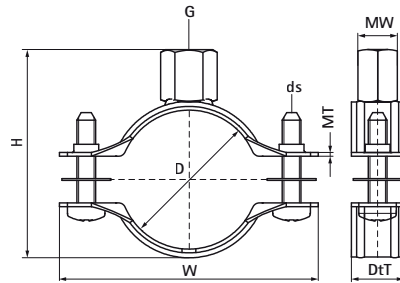


Walraven 2S Clamp (M8/10)

(B0524)

for insulated pipe, steel, cast iron and plastic (multilayer) pipe



Features & benefits

- gapless range
- anti loss washers prevent screws from falling out during installation
- perfect solution for insulated pipe supports
- material: steel
- zinc plated



Product Number	RSK Number	DN	Pipe Diameter Imperial	Connection Thread	Total Height	Total Width	Total Depth	Material Width	Material Thickness	Screw Size	Maximum Allowed Load Faz	Approvals
Reference letter		D	D	G	H	W	DtT	MW	MT	ds	Fa,z	
Unit description			"		mm	mm	mm	mm	mm		N	
33035014	3804684	-	-	M8/M10	35	46	20	20	1.00	M5	700	ITB (KOT), CE, ETA, RAL-GZ 655/B, EPD
33035019	3804685	DN 10	3/8	M8/M10	40	51	20	20	1.00	M5	700	ITB (KOT), CE, ETA, RAL-GZ 655/B, EPD
33035024	3804686	DN 15	1/2	M8/M10	45	56	20	20	1.00	M5	700	ITB (KOT), CE, ETA, RAL-GZ 655/B, EPD
33035030	3804700	DN 20	3/4	M8/M10	51	62	20	20	1.00	M5	700	ITB (KOT), CE, ETA, RAL-GZ 655/B, EPD
33035037	3804701	DN 25	1	M8/M10	58	69	20	20	1.00	M5	700	ITB (KOT), CE, ETA, RAL-GZ 655/B, EPD
33035046	3804702	DN 32	1 1/4	M8/M10	67	77	20	20	1.25	M5	950	ITB (KOT), CE, ETA, RAL-GZ 655/B, EPD
33035052	3804703	DN 40	1 1/2	M8/M10	73	84	20	20	1.25	M5	950	ITB (KOT), CE, ETA, RAL-GZ 655/B, EPD
33035061	3804704	DN 50	2	M8/M10	82	93	20	20	1.25	M5	950	ITB (KOT), CE, ETA, RAL-GZ 655/B, EPD
33035067	3804706	-	-	M8/M10	88	99	20	20	1.25	M5	950	ITB (KOT), CE, ETA, RAL-GZ 655/B, EPD
33035074	3804707	-	-	M8/M10	96	111	20	20	1.50	M6	1,400	ITB (KOT), CE, ETA, RAL-GZ 655/B, EPD
33035081	3804708	DN 65	2 1/2	M8/M10	103	118	20	20	1.50	M6	1,400	ITB (KOT), CE, ETA, RAL-GZ 655/B, EPD
33035087	3804709	-	-	M8/M10	109	124	20	20	1.50	M6	1,400	ITB (KOT), CE, ETA, RAL-GZ 655/B, EPD
33035095	3804710	DN 80	3	M8/M10	119	136	23	23	2.00	M6	2,000	ITB (KOT), CE, ETA, RAL-GZ 655/B, EPD
33035103	3804711	-	-	M8/M10	127	143	23	23	2.00	M6	2,000	ITB (KOT), CE, ETA, RAL-GZ 655/B, EPD
33035112	3804712	-	-	M8/M10	136	153	23	23	2.00	M6	2,000	ITB (KOT), CE, ETA, RAL-GZ 655/B, EPD
33035118	3804714	DN 100	4	M8/M10	142	159	23	23	2.00	M6	2,000	ITB (KOT), CE, ETA, RAL-GZ 655/B, EPD
33035127	3804715	-	-	M8/M10	151	168	23	23	2.00	M6	2,000	ITB (KOT), CE, ETA, RAL-GZ 655/B, EPD
33035137	3804716	-	-	M8/M10	161	178	23	23	2.00	M6	2,000	ITB (KOT), CE, ETA, RAL-GZ 655/B, EPD
33035144	3804717	DN 125	5	M8/M10	168	185	23	23	2.00	M6	2,000	ITB (KOT), CE, ETA, RAL-GZ 655/B, EPD
33035153	3804718	-	-	M8/M10	177	194	23	23	2.00	M6	2,000	ITB (KOT), CE, ETA, RAL-GZ 655/B, EPD
33035162	3804719	-	-	M8/M10	186	203	23	23	2.00	M6	2,000	ITB (KOT), CE, ETA, RAL-GZ 655/B, EPD

Walraven 2S Clamp (M8/10)

(B0524)

for insulated pipe, steel, cast iron and plastic (multilayer) pipe

Product Number	RSK Number	DN	Pipe Diameter Imperial	Connection Thread	Total Height	Total Width	Total Depth	Material Width	Material Thickness	Screw Size	Maximum Allowed Load Faz	Approvals
<i>Reference letter</i>		<i>D</i>	<i>D</i>	<i>G</i>	<i>H</i>	<i>W</i>	<i>DtT</i>	<i>MW</i>	<i>MT</i>	<i>ds</i>	<i>Fa,z</i>	
<i>Unit description</i>			"		mm	mm	mm	mm	mm		N	
33035172	3804720	DN 150	6	M8/M10	199	217	25	25	2.50	M6	3,300	ITB (KOT), CE, ETA, RAL-GZ 655/B, EPD
33035183	3804722	-	-	M8/M10	210	227	25	25	2.50	M6	3,300	ITB (KOT), CE, ETA, RAL-GZ 655/B, EPD
33035194	3804723	-	-	M8/M10	221	239	25	25	2.50	M6	3,300	ITB (KOT), CE, ETA, RAL-GZ 655/B, EPD
33035205	3804724	-	-	M8/M10	232	249	25	25	2.50	M6	3,300	ITB (KOT), CE, ETA, RAL-GZ 655/B, EPD
33035216	3804725	-	-	M8/M10	243	260	25	25	2.50	M6	3,300	ITB (KOT), CE, ETA, RAL-GZ 655/B, EPD
33035225	3804726	DN 200	8	M8/M10	253	271	25	25	2.50	M6	3,300	ITB (KOT), CE, ETA, RAL-GZ 655/B, EPD