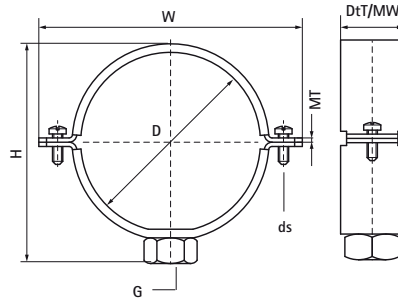


Walraven 434 Clamp (M10) (zp)

(B3525)

for PE-pipes



Features & benefits

- two-screw clamp
- as guiding clamp for PE-Pipe
- for rigid fixing point fastening it is necessary to use metal clamp liners (Part No. 4337XXX)
- screws secured with anti-loss washer
- material: steel
- zinc plated



Product Number	DN	Connection Thread	Total Height	Total Width	Total Depth	Material Width	Material Thickness	Screw Size	Maximum Allowed Load Faz	Approvals
Reference letter	D	G	H	W	DtT	MW	MT	ds	Fa,z	
Unit description	mm									N
4343040	DN 32	M10	63	84	30	30	3.00	M6	1,100	ITB (KOT), EPD
4343050	DN 40	M10	73	94	30	30	3.00	M6	1,100	ITB (KOT), EPD
4343056	DN 50	M10	79	100	30	30	3.00	M6	1,100	ITB (KOT), EPD
4343063	-	M10	87	108	30	30	3.00	M6	1,100	ITB (KOT), EPD
4343075	DN 70	M10	99	119	30	30	3.00	M6	1,100	ITB (KOT), EPD
4343090	DN 80	M10	113	134	30	30	3.00	M6	1,100	ITB (KOT), EPD
4343110	DN 100	M10	134	154	30	30	3.00	M6	1,100	ITB (KOT), EPD
4343125	DN 125	M10	150	169	30	30	3.00	M6	1,100	ITB (KOT), EPD
4343160	DN 150	M10	185	204	30	30	3.00	M6	1,100	ITB (KOT), EPD
4343200	DN 200	M10	220	281	38	38	4.00	M8	6,200	ITB (KOT), EPD
4343250	DN 250	M10	270	325	38	38	4.00	M8	6,200	ITB (KOT), EPD
4343315	DN 300	M10	335	393	38	38	4.00	M8	6,200	ITB (KOT), EPD