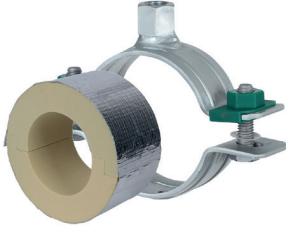


Walraven BISOFIX® PIR30 + HD500

(D0366)

for insulated pipes



Features & benefits

- for combination with rigid foam insulation
- cover joints with aluminium tape
- insulating pipe support with HD500 clamp
- HD500 clamp with M8/M10 and M10/M12 connection nut
- does not contain CFC, HCFC, formaldehyde or cadmium
- fire class B2
- PIR density for $D < 110\text{mm} = 80\text{kg/m}^3$
- PIR density for $D > 110\text{mm} = 120\text{kg/m}^3$
- thermal conductivity lambda (approx. value): 0.30 W/(mK)
- product is part of the Walraven UltraProtect® 1000 system
- suitable for in- and outdoor applications
- stands min. 1,000 hours salt spray test (max. 5% red rust) according to ISO 9227
- temperature range $-45\text{ °C} - +105\text{ °C}$

| Product Number | Connection Thread | Total Height | Total Width | Total Length | Insulation Thickness | Maximum Allowed Load Fa,z |
|------------------|-------------------|--------------|-------------|--------------|----------------------|---------------------------|
| Reference letter | G | H | W | L | Is | Fa,z |
| Unit description | | mm | mm | mm | mm | N |
| I303304076 | M10/M12 | 177 | 200 | 75 | 30 | 460 |
| I303304089 | M10/M12 | 191 | 215 | 75 | 30 | 500 |
| I303304102 | M10/M12 | 207 | 240 | 100 | 30 | 550 |
| I303304108 | M10/M12 | 207 | 240 | 100 | 30 | 620 |
| I303304114 | M10/M12 | 221 | 254 | 100 | 30 | 1,370 |
| I303304133 | M10/M12 | 240 | 274 | 100 | 30 | 1,520 |
| I303304140 | M10/M12 | 240 | 274 | 100 | 30 | 1,570 |
| I303304160 | M10/M12 | 256 | 290 | 100 | 30 | 1,720 |
| I303304168 | M10/M12 | 265 | 299 | 100 | 30 | 2,720 |
| I303304219 | M10/M12 | 324 | 367 | 150 | 30 | 4,210 |
| I303304273 | M10/M12 | 358 | 403 | 150 | 30 | 5,020 |
| I303304324 | M10/M12 | 424 | 468 | 150 | 30 | 5,790 |