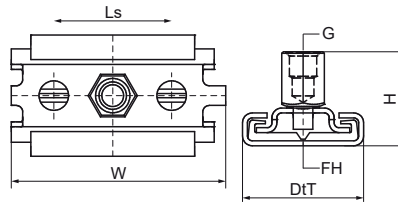
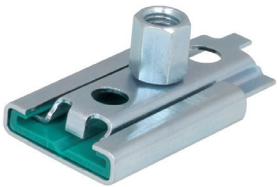


Walraven Expansion Device 1-N

(E1022)

fixing with sliding assemblies



Features & benefits

- single bracket for accommodation of pipe thermal expansion or contraction
- fix directly on the building structure or in combination with rail systems
- suitable for ceiling mounting (suspended) and floor mounting (standing mounted)
- a variety of connection possibilities, can be combined with all pipe clamps
- friction coefficient $\mu = 0.18$; Sliding friction coefficient $\mu = 0.14$
- material: metal parts made of steel 1.0332; plastic parts made of PA (polyamide)
- zinc plated
- temperature resistance up to $+120\text{ }^{\circ}\text{C}$
- max. allowed load: standing = $F_{a,z}$; suspended = $F_{a,z} \cdot 2$
- single version not suitable for pipes $\geq \text{DN } 200$



Product Number	RSK Number	Connection Thread	Total Height	Total Width	Total Depth	Fixing Hole	Slide Distance	Maximum Allowed Load $F_{a,z}$	Maximum Allowed Load $F_{a,z} \cdot 2$
<i>Reference letter</i>		G	H	W	DtT	FH	Ls	$F_{a,z}$	
<i>Unit description</i>			mm	mm	mm	mm	mm	N	N
6663410	4436211	M8/M10	29	66	37	8.4	42	700	700