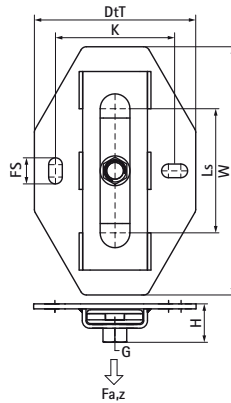
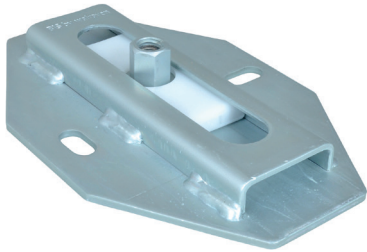


Walraven Expansion Device (BUP1000)

(E1035)

fixing with sliding assemblies



Features & benefits

- single support for accommodation of pipe thermal expansion or contraction
- secure parts ensure mechanism will not slide out
- fix directly on the building structure or in combination with rail systems
- suitable for ceiling mounting (suspended) and floor mounting (standing mounted)
- very low installation height, useful in small spaces
- a variety of connection possibilities, can be combined with all pipe clamps
- material: metal parts made of steel; plastic parts made of POM (polyoxymethylene)
- friction coefficient $\mu = 0.18$; Sliding friction coefficient $\mu = 0.14$
- product is part of the Walraven UltraProtect® 1000 system
- suitable for in- and outdoor applications
- stands min. 1,000 hours salt spray test (max. 5% red rust) according to ISO 9227
- temperature resistance up to +120 °C
- tested for fire safety according to EN 1363-1

| Product Number | RSK Number | Connection Thread | Total Height | Total Width | Total Depth | Fixing Slot | Heart To Heart Distance | Slide Distance | Maximum Allowed Load Fa,z |
|------------------|------------|-------------------|--------------|-------------|-------------|-------------|-------------------------|----------------|---------------------------|
| Reference letter | | G | H | W | DtT | FS | k | Ls | Fa,z |
| Unit description | | | mm | mm | mm | mm | mm | mm | N |
| 6668310 | 3897547 | M8/M10 | 31 | 200 | 130 | 21x11 | 96 | 100 | 3,500 |
| 6668312 | 3897548 | M10/M12 | 33 | 200 | 130 | 21x11 | 96 | 100 | 4,800 |
| 6668316 | 3897549 | M16 | 31 | 200 | 130 | 21x11 | 96 | 100 | 4,800 |