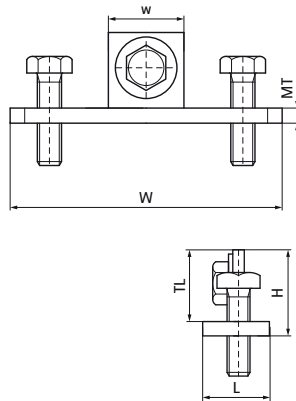


## Walraven Inter Flange Beam Clamp Light

(G2035)

to connect light fixing rails inside of steel beam flanges



### Features & benefits

- for a solid fixing to steel construction without the need for welding or drilling
- always use 2 beam clamps per fixing
- also suitable for fixing in risershafts
- suitable for rails 27x18, 30x15, 30x20, 30x30 and 30x45
- material: steel
- zinc plated

Product Number	RSK Number	For Rail Type	Total Height	Total Width	Total Length	Thread Size	Thread Length	Width	Material Thickness	Maximum Allowed Load Faz	Torque Moment For Installation
Reference letter			H	W	L	TS	TL	w	MT	F <sub>0,z</sub>	T <sub>inst</sub>
Unit description			mm	mm	mm		mm	mm	mm	N	Nm
6613820	3820197	27x18, 30x15, 30x20, 30x30, 30x45, 38x40	30	89	25	M8	25	25	5.00	500	15