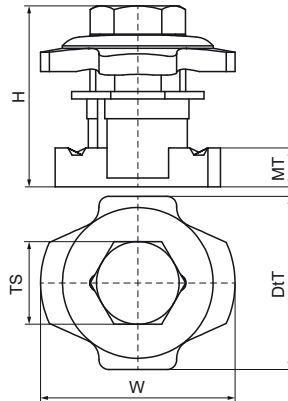


Walraven PushStrut Button

(H2905)

for easy installation of complex rail constructions



Features & benefits

- universal button: easily combined with all common Walraven RapidStrut® profiles and all Walraven PushStrut Connectors
- teeth with force fit connections offer more stability
- timesaving and flexible
- easy to remove and reusable
- 3D constructions due to 3D Connectors
- material: steel
- zinc plated
- The max. allowed load F_{az} in the table refers to rails and cantilever arms with a material thickness of 2.5 mm.
- The F_{az} at a thickness of 2.0 mm profile thickness = 4,500 N.
- The F_{az} at a thickness of 1.5 mm profile thickness = 3,500 N.

Product Number	RSK Number	For Rail Type	Thread Size	Material Thickness	Torque Moment For Installation	Maximum Allowed Load F_{ax}	Maximum Allowed Load F_{az}	Total Height	Total Width	Total Depth
<i>Reference letter</i>			<i>TS</i>	<i>MT</i>	<i>T_{inst.}</i>	<i>F_{a,x}</i>	<i>F_{a,z}</i>	<i>H</i>	<i>W</i>	<i>DtT</i>
<i>Unit description</i>				<i>mm</i>	<i>Nm</i>	<i>N</i>	<i>N</i>	<i>mm</i>	<i>mm</i>	<i>mm</i>
66519910	3806027	41x21, 41x41, 41x51, 41x62, 41x82	M10	8.00	40	3,000	5,000	37.72	40	35.6