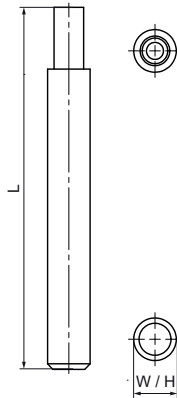


## Walraven WGB-M Setting Tool

(L0383)

for installation of WGB-M



### Features & benefits

- for use with WGB-M M10 or M12 aerated concrete anchors
- solid metal construction ensures high durability and many years of service

Product Number	RSK Number	For Thread Size	Total Height	Total Width	Total Length
<i>Reference letter</i>		<i>fts</i>	<i>H</i>	<i>W</i>	<i>L</i>
<i>Unit description</i>			<i>mm</i>	<i>mm</i>	<i>mm</i>
6902511	3767377	M10/M12	20	20	170