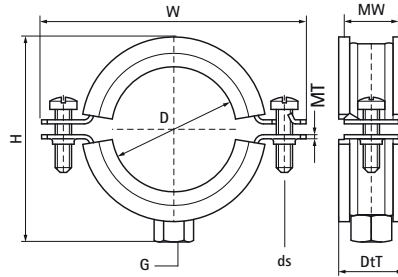


## Walraven Bifix® 1301 Stainless Steel (M8)

(M0505)

for stainless steel and plastic pipes



### Features & benefits

- two-screw clamp
- with quick locking system
- material: stainless steel 1.4404 (AISI 316L)
- noise insulating lining, EPDM rubber, black
- age resistant lining
- sound insulating lining according DIN 4109



Product Number	RSK Number	DN	Pipe Diameter Imperial	Connection Thread	Total Height	Total Width	Total Depth	Material Width	Material Thickness	Screw Size	Maximum Allowed Load Faz	Approvals
Reference letter		D	D	G	H	W	DtT	MW	MT	ds	F <sub>0,z</sub>	
Unit description		"	"		mm	mm	mm	mm	mm		N	
3117015	3803940	DN 8	1/4	M8	33	58	25	20	1.25	M6	900	RAL-GZ 655/B, ITB (KOT), EPD
3117018	3803989	DN 10	3/8	M8	37	62	25	20	1.25	M6	900	RAL-GZ 655/B, ITB (KOT), EPD
3117023	3803990	DN 15	1/2	M8	41	64	25	20	1.25	M6	900	RAL-GZ 655/B, ITB (KOT), EPD
3117029	3803991	DN 20	3/4	M8	47	70	25	20	1.25	M6	900	RAL-GZ 655/B, ITB (KOT), EPD
3117035	3803992	DN 25	1	M8	54	78	25	20	1.25	M6	900	RAL-GZ 655/B, ITB (KOT), EPD
3117043	3803993	DN 32	1 1/4	M8	61	85	25	20	1.25	M6	900	RAL-GZ 655/B, ITB (KOT), EPD
3117049	3803994	DN 40	1 1/2	M8	70	97	25	20	1.25	M6	900	RAL-GZ 655/B, ITB (KOT), EPD
3117056	3803996	-	-	M8	75	97	25	20	1.25	M6	900	RAL-GZ 655/B, ITB (KOT), EPD
3117063	3803997	DN 50	2	M8	80	102	25	20	1.25	M6	900	RAL-GZ 655/B, ITB (KOT), EPD
3117067	3859507	-	-	M8	87	109	25	20	2.00	M6	1,350	RAL-GZ 655/B, ITB (KOT), EPD
3117076	3803998	DN 65	2 1/2	M8	96	118	25	20	2.00	M6	1,350	RAL-GZ 655/B, ITB (KOT), EPD
3117091	3803999	DN 80	3	M8	108	130	25	20	2.00	M6	1,350	RAL-GZ 655/B, ITB (KOT), EPD
3117106	3804000	-	-	M8	132	154	25	20	2.50	M6	1,350	RAL-GZ 655/B, ITB (KOT), EPD
3117116	3804699	DN 100	4	M8	136	158	25	20	2.50	M6	1,710	RAL-GZ 655/B, ITB (KOT), EPD