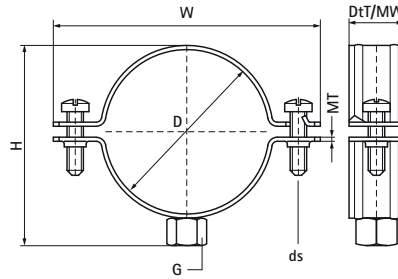


Walraven Bifix® 300 Stainless Steel (M10)

(M1006)

for stainless steel and plastic pipes



Features & benefits

- two-screw clamp
- with quick locking system
- material: stainless steel 1.4404 (AISI 316L)



Product Number	RSK Number	DN	Pipe Diameter Imperial	Connection Thread	Total Height	Total Width	Total Depth	Material Width	Material Thickness	Screw Size	Maximum Allowed Load Faz	Approvals
Reference letter		D	D	G	H	W	DtT	MW	MT	ds	F _{0,z}	
Unit description		"			mm	mm	mm	mm	mm		N	
3027068	3800220	-	-	M10	80	102	20	20	1.25	M6	1,500	RAL-GZ 655/B, ITB (KOT), EPD
3027076	3800221	-	-	M10	87	109	20	20	2.00	M6	1,500	RAL-GZ 655/B, ITB (KOT), EPD
3027085	3800222	-	-	M10	97	118	20	20	2.00	M6	1,500	RAL-GZ 655/B, ITB (KOT), EPD
3027089	3800223	DN 80	3	M10	102	124	20	20	2.00	M6	1,500	RAL-GZ 655/B, ITB (KOT), EPD
3027105	3800224	-	-	M10	117	139	20	20	2.00	M6	1,500	RAL-GZ 655/B, ITB (KOT), EPD
3027111	3800225	-	-	M10	124	146	20	20	2.50	M6	1,900	RAL-GZ 655/B, ITB (KOT), EPD
3027118	3800226	DN 100	4	M10	132	154	20	20	2.50	M6	1,900	RAL-GZ 655/B, ITB (KOT), EPD
3027127	3800227	-	-	M10	140	163	20	20	2.50	M6	1,900	RAL-GZ 655/B, ITB (KOT), EPD
3027134	3800228	-	-	M10	148	170	20	20	2.50	M6	1,900	RAL-GZ 655/B, ITB (KOT), EPD
3027144	3800234	DN 125	5	M10	157	179	20	20	2.50	M6	1,900	RAL-GZ 655/B, ITB (KOT), EPD
3027155	3800229	-	-	M10	172	192	20	20	2.50	M6	1,900	RAL-GZ 655/B, ITB (KOT), EPD
3027162	3800230	-	-	M10	174	196	20	20	2.50	M6	1,900	RAL-GZ 655/B, ITB (KOT), EPD
3027169	3800231	DN 150	6	M10	182	204	20	20	2.50	M6	1,900	RAL-GZ 655/B, ITB (KOT), EPD
3027200	3800232	-	-	M10	216	256	25	20	2.50	M8	1,900	RAL-GZ 655/B, ITB (KOT), EPD
3027219	3800233	DN 200	8	M10	233	273	25	25	2.50	M8	1,900	RAL-GZ 655/B, ITB (KOT), EPD