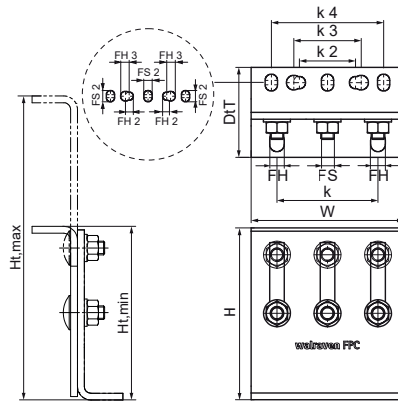


Walraven Stainless Steel Fixpoint Console FPC

(M1902)

for fixing point assembly



Features & benefits

- flexible use console module for high forces (depending on the situation, detailed design by technical service)
- can be used as a pipe connection point in conjunction with 2 or 3 heavy-duty clamps type HD700 or HD500 Black
- tightening torque 75 Nm for the console fixing screws
- suitable for in- and outdoor applications
- material: stainless steel A4 (1.4401/ AISI 316)



Product Number	RSK Number	Minimum Height	Maximum Height	Maximum Allowed Load Faz	Maximum Allowed Load Fay	Maximum Allowed Load Fax	Fixing Slot FS	Fixing Hole FH	Heart To Heart Distance k	Fixing Slot 2 FS 2	Fixing Hole 2 FH 2	Fixing Hole 3 FH 3	Heart To Heart Distance 2 k 2	Heart To Heart Distance 3 k 3	Heart To Heart Distance 4 k 4	Total Width W	Total Height H	Total Depth DtT
Reference letter		Ht,min	Ht,max	Fa,z	Fa,y	Fa,x	FS	FH	k	FS 2	FH 2	FH 3	k 2	k 3	k 4	W	H	DtT
Unit description		mm	mm	N	N	N	mm	mm	mm	mm	mm	mm	mm	mm	mm	mm	mm	mm
6697206	4436424	153	268	14,300	11,500	3,200	15x13	13	90	15x11	11	13	50	60	100	136	153	86.5