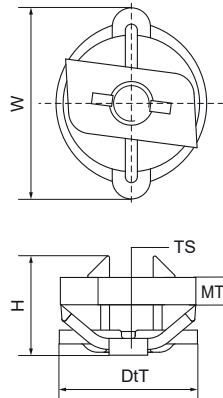


Walraven RapidRail® Stainless Steel Slide Nut

(M2905)

for quick connection of clamps



Features & benefits

- slide nut with washer and Walraven RapidRail® spring
- ready-to-use pre-assembled for a quick fixing, and retains assembly in place before final tightening
- material: metal parts made of stainless steel 1.4401 (AISI 316); spring(s) made of POM (polyoxymethylene), blue



Product Number	RSK Number	For Rail Type	Thread Size	Material Thickness	Torque Moment For Installation	Maximum Allowed Load Faz	Total Height	Total Width	Total Depth
<i>Reference letter</i>			<i>TS</i>	<i>MT</i>	<i>T inst.</i>	<i>F_{a,z}</i>	<i>H</i>	<i>W</i>	<i>DtT</i>
<i>Unit description</i>				<i>mm</i>	<i>Nm</i>	<i>N</i>	<i>mm</i>	<i>mm</i>	<i>mm</i>
6517306	4436412	30x15, 30x20, 30x30	M6	4.00	7.5	2,000	17.13	27.55	35
6517308	3820844	30x15, 30x20, 30x30	M8	5.00	10	2,700	18.35	27.55	35
6517310	3820845	30x15, 30x20, 30x30	M10	5.00	10	2,900	18.47	27.55	35