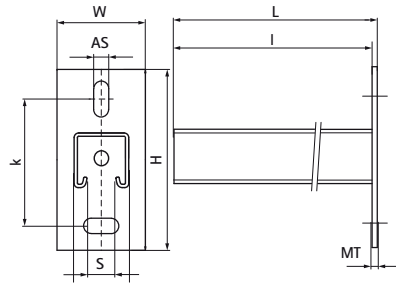
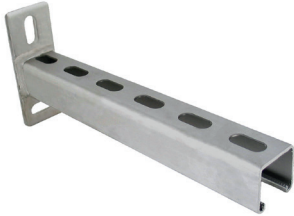


## Walraven RapidStrut® Stainless Steel Cantilever Arm

(M5005)

fixing to wall



### Features & benefits

- wall plate welded on Walraven RapidStrut® Profile
- slots at 90° to each other to simplify fixing
- CO<sub>2</sub> welded
- inward formed flanges with serrated profile for extra grip
- Type 41x41x2,5 tested for fire safety according EN1363-1
- material: stainless steel 1.4404 (AISI 316)
- for more information about the max. allowed load (Faz) please refer to the loading tables or our online datasheet 'Walraven RapidStrut® Data Sheet'



Product Number	RSK Number	Type	Length	Total Height	Total Width	Total Length	Material Thickness	Anchoring Slot	Profile Opening	Heart To Heart Distance
<i>Reference letter</i>			<i>l</i>	<i>H</i>	<i>W</i>	<i>L</i>	<i>MT</i>	<i>AS</i>	<i>S</i>	<i>k</i>
<i>Unit description</i>			<i>mm</i>	<i>mm</i>	<i>mm</i>	<i>mm</i>	<i>mm</i>	<i>mm</i>	<i>mm</i>	<i>mm</i>
6607861	4125739	41x41x2,5	150	130	48	158	8.00	30x13	22	87.5
6607862	4125740	41x41x2,5	300	130	45	308	8.00	30x13	22	87.5
6607863	4125741	41x41x2,5	450	130	45	458	8.00	30x13	22	87.5
6607864	4125742	41x41x2,5	600	130	45	600	8.00	30x13	22	87.5
6607865	4125743	41x41x2,5	750	130	48	758	8.00	30x13	22	87.5
6607870	4125744	41x41x2,5	200	130	48	208	8.00	30x13	22	87.5
6607873	4125745	41x41x2,5	500	130	48	508	8.00	30x13	22	87.5
6607874	4125746	41x41x2,5	400	130	48	408	8.00	30x13	22	87.5