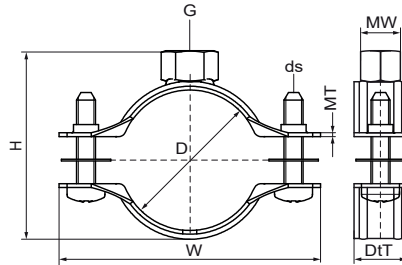


Walraven 2S Clamp (M8/10)

(B0524)

for insulated pipe, steel, cast iron and plastic (multilayer) pipe



Features & benefits

- gapless range
- anti loss washers prevent screws from falling out during installation
- perfect solution for insulated pipe supports
- material: steel
- zinc plated



Product Number	Outside Pipe Diameter	DN	Pipe Diameter Imperial	Connection Thread	Total Height	Total Width	Total Depth	Material Width	Material Thickness	Screw Size	Maximum Allowed Load Faz	Approvals
Reference Letter	D	D	D	G	H	W	DeT	MW	MT	ds	Fo,z	
Unit description	mm		"		mm	mm	mm	mm	mm		N	
33035014	10 - 14	-	-	M8/M10	35	46	20	20	1.00	M5	700	ITB (KOT), CE, ETA, RAL-GZ 655/B, EPD
33035019	15 - 19	DN 10	3/8	M8/M10	40	51	20	20	1.00	M5	700	ITB (KOT), CE, ETA, RAL-GZ 655/B, EPD
33035024	20 - 24	DN 15	1/2	M8/M10	45	56	20	20	1.00	M5	700	ITB (KOT), CE, ETA, RAL-GZ 655/B, EPD
33035030	25 - 30	DN 20	3/4	M8/M10	51	62	20	20	1.00	M5	700	ITB (KOT), CE, ETA, RAL-GZ 655/B, EPD
33035037	31 - 37	DN 25	1	M8/M10	58	69	20	20	1.00	M5	700	ITB (KOT), CE, ETA, RAL-GZ 655/B, EPD
33035046	38 - 46	DN 32	1 1/4	M8/M10	67	77	20	20	1.25	M5	950	ITB (KOT), CE, ETA, RAL-GZ 655/B, EPD
33035052	47 - 52	DN 40	1 1/2	M8/M10	73	84	20	20	1.25	M5	950	ITB (KOT), CE, ETA, RAL-GZ 655/B, EPD
33035061	53 - 61	DN 50	2	M8/M10	82	93	20	20	1.25	M5	950	ITB (KOT), CE, ETA, RAL-GZ 655/B, EPD
33035067	62 - 67	-	-	M8/M10	88	99	20	20	1.25	M5	950	ITB (KOT), CE, ETA, RAL-GZ 655/B, EPD
33035074	68 - 74	-	-	M8/M10	96	111	20	20	1.50	M6	1,400	ITB (KOT), CE, ETA, RAL-GZ 655/B, EPD
33035081	75 - 81	DN 65	2 1/2	M8/M10	103	118	20	20	1.50	M6	1,400	ITB (KOT), CE, ETA, RAL-GZ 655/B, EPD
33035087	82 - 87	-	-	M8/M10	109	124	20	20	1.50	M6	1,400	ITB (KOT), CE, ETA, RAL-GZ 655/B, EPD
33035095	88 - 95	DN 80	3	M8/M10	119	136	23	23	2.00	M6	2,000	ITB (KOT), CE, ETA, RAL-GZ 655/B, EPD
33035103	96 - 103	-	-	M8/M10	127	143	23	23	2.00	M6	2,000	ITB (KOT), CE, ETA, RAL-GZ 655/B, EPD
33035112	104 - 112	-	-	M8/M10	136	153	23	23	2.00	M6	2,000	ITB (KOT), CE, ETA, RAL-GZ 655/B, EPD
33035118	113 - 118	DN 100	4	M8/M10	142	159	23	23	2.00	M6	2,000	ITB (KOT), CE, ETA, RAL-GZ 655/B, EPD
33035127	119 - 127	-	-	M8/M10	151	168	23	23	2.00	M6	2,000	ITB (KOT), CE, ETA, RAL-GZ 655/B, EPD
33035137	128 - 137	-	-	M8/M10	161	178	23	23	2.00	M6	2,000	ITB (KOT), CE, ETA, RAL-GZ 655/B, EPD
33035144	138 - 144	DN 125	5	M8/M10	168	185	23	23	2.00	M6	2,000	ITB (KOT), CE, ETA, RAL-GZ 655/B, EPD
33035153	145 - 153	-	-	M8/M10	177	194	23	23	2.00	M6	2,000	ITB (KOT), CE, ETA, RAL-GZ 655/B, EPD
33035162	154 - 162	-	-	M8/M10	186	203	23	23	2.00	M6	2,000	ITB (KOT), CE, ETA, RAL-GZ 655/B, EPD

Walraven 2S Clamp (M8/10)

(B0524)

for insulated pipe, steel, cast iron and plastic (multilayer) pipe

Product Number	Outside Pipe Diameter	DN	Pipe Diameter Imperial	Connection Thread	Total Height	Total Width	Total Depth	Material Width	Material Thickness	Screw Size	Maximum Allowed Load Faz	Approvals
Reference Letter	<i>D</i>	<i>D</i>	<i>D</i>	<i>G</i>	<i>H</i>	<i>W</i>	<i>DtT</i>	<i>MW</i>	<i>MT</i>	<i>ds</i>	<i>Fa,z</i>	
Unit description	mm		"		mm	mm	mm	mm	mm		N	
33035172	163 - 172	DN 150	6	M8/M10	199	217	25	25	2.50	M6	3,300	ITB (KOT), CE, ETA, RAL-GZ 655/B, EPD
33035183	173 - 183	-	-	M8/M10	210	227	25	25	2.50	M6	3,300	ITB (KOT), CE, ETA, RAL-GZ 655/B, EPD
33035194	184 - 194	-	-	M8/M10	221	239	25	25	2.50	M6	3,300	ITB (KOT), CE, ETA, RAL-GZ 655/B, EPD
33035205	195 - 205	-	-	M8/M10	232	249	25	25	2.50	M6	3,300	ITB (KOT), CE, ETA, RAL-GZ 655/B, EPD
33035216	206 - 216	-	-	M8/M10	243	260	25	25	2.50	M6	3,300	ITB (KOT), CE, ETA, RAL-GZ 655/B, EPD
33035225	217 - 225	DN 200	8	M8/M10	253	271	25	25	2.50	M6	3,300	ITB (KOT), CE, ETA, RAL-GZ 655/B, EPD