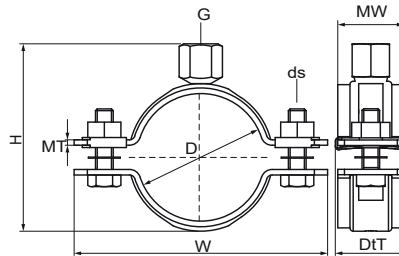


Walraven Heavy Duty Clamp HD500 (M10)

(B1008)

for steel pipes



Features & benefits

- two-part clamp with two locking bolts
- locking nut is captive, hidden in plastic holder
- heavy design
- bolts secured with anti-loss washer
- with CO₂ welded connection nut
- material: steel
- surface protection: product is part of the Walraven BIS UltraProtect® 1000 system
- suitable for in- and outdoor applications
- stands min. 1,000 hours salt spray test (max. 5% red rust) according to ISO 9227
- FM & VdS certified for sprinkler installations



Product Number	Outside Pipe Diameter	DN	Pipe Diameter Imperial	Connection Thread	Total Height	Total Width	Total Depth	Material Width	Material Thickness	Screw Size	Maximum Allowed Load Faz	Approvals
Reference Letter	D	D	D	G	H	W	D _t	MW	MT	ds	F _{o,z}	
Unit description	mm		"		mm	mm	mm	mm	mm		N	
33018030	25 - 30	DN 20	¾	M10	49	85	32	30	2.50	M8	2,100	FM, VdS, CE, ETA, EPD
33018036	31 - 36	DN 25	1	M10	55	91	32	30	2.50	M8	2,100	FM, VdS, CE, ETA, EPD
33018045	40 - 45	DN 32	1¼	M10	64	102	32	30	2.50	M8	2,100	FM, VdS, CE, ETA, EPD
33018052	47 - 52	DN 40	1½	M10	71	109	32	30	2.50	M8	2,100	FM, VdS, CE, ETA, EPD
33018065	59 - 65	DN 50	2	M10	84	121	32	30	2.50	M8	2,100	FM, VdS, CE, ETA, EPD