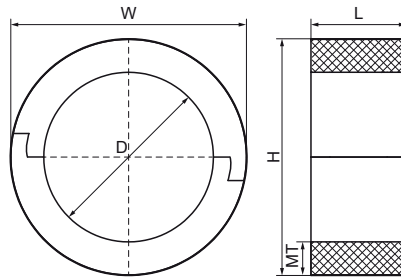


Walraven IH126K Phenolic Insulation Block 20 mm Thick

(D1010)

for steel, copper and plastic pipe



Features & benefits

- load bearing insulation ring for steel, copper and plastic pipe
- metal spreader plate recommended above 50 NB
- foil covered
- manufactured from High Density Phenolic Foam
- negligible water absorption
- does not contain CFC's and HCFC's
- K value 0.030 to 0.037 W/(mK) at 10 °C
- thermal conductivity determined by testing cylindrical specimen according to BS EN ISO 8497
- reaction to fire: BL-s1 d0
- density: <111mm OD pipe, 60kgs/m3
- density: 111mm to 169mm OD pipe, 80kgs/m3
- density: >170mm OD pipe, 120kgs/m3
- temperature resistance from -50 °C to +110 °C



| Product Number | Outside Pipe Diameter | DN | Total Height | Total Width | Total Length | Material Thickness | Operating Temperature | Maximum Allowed Load Faz |
|------------------|-----------------------|--------|--------------|-------------|--------------|--------------------|-----------------------|--------------------------|
| Reference Letter | D | D | H | W | L | MT | | F _{0,z} |
| Unit description | mm | | mm | mm | mm | mm | CEL | N |
| 8901020015 | 15 | | 55 | 55 | 90 | 20.00 | -50 - 110 | 120 |
| 8901020021 | 22 | DN 15 | 61 | 61 | 90 | 20.00 | -50 - 110 | 176 |
| 8901020027 | 28 | DN 20 | 67 | 67 | 90 | 20.00 | -50 - 110 | 224 |
| 8901020034 | 35 | DN 25 | 74 | 74 | 90 | 20.00 | -50 - 110 | 280 |
| 8901020042 | 42 | DN 32 | 82 | 82 | 90 | 20.00 | -50 - 110 | 337 |
| 8911020048 | 48 | DN 40 | 88 | 88 | 90 | 20.00 | -50 - 110 | 387 |
| 8911020054 | 54 | | 94 | 94 | 90 | 20.00 | -50 - 110 | 433 |
| 8911020060 | 60 | DN 50 | 100 | 100 | 90 | 20.00 | -50 - 110 | 483 |
| 8911020066 | 66 | | 106 | 106 | 90 | 20.00 | -50 - 110 | 529 |
| 8911020076 | 76 | DN 65 | 116 | 116 | 90 | 20.00 | -50 - 110 | 609 |
| 8911020089 | 89 | DN 80 | 129 | 129 | 90 | 20.00 | -50 - 110 | 713 |
| 8911020108 | 108 | | 148 | 148 | 90 | 20.00 | -50 - 110 | 865 |
| 8911020114 | 114 | DN 100 | 154 | 154 | 90 | 20.00 | -50 - 110 | 1,827 |
| 8911020133 | 133 | | 173 | 173 | 90 | 20.00 | -50 - 110 | 2,131 |
| 8911020140 | 139 | DN 125 | 180 | 180 | 90 | 20.00 | -50 - 110 | 2,239 |
| 8911220168 | 168 | DN 150 | 208 | 208 | 125 | 20.00 | -50 - 110 | 2,692 |
| 8901020030 | 30 | | 70 | 70 | 90 | 20.00 | -50 - 110 | 240 |
| 8901020037 | 37 | | 77 | 77 | 90 | 20.00 | -50 - 110 | 296 |
| 8911020063 | 63 | | 103 | 103 | 90 | 20.00 | -50 - 110 | 505 |
| 8911220219 | 219 | DN 200 | 259 | 259 | 125 | 20.00 | -50 - 110 | 11,468 |