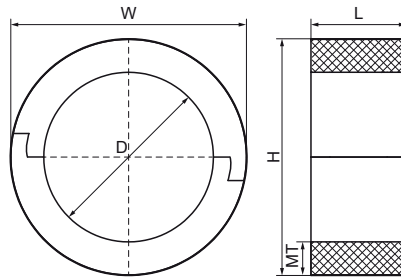


Walraven IH126K Phenolic Insulation Block 30 mm Thick

(D1020)

for steel, copper and plastic pipe



Features & benefits

- load bearing insulation ring for steel, copper and plastic pipe
- metal spreader plate recommended above 50 NB
- foil covered
- manufactured from High Density Phenolic Foam
- negligible water absorption
- does not contain CFC's and HCFC's
- K value 0.030 to 0.037 W/(mK) at 10 °C
- thermal conductivity determined by testing cylindrical specimen according to BS EN ISO 8497
- reaction to fire: BL-s1 d0
- density: <111mm OD pipe, 60kgs/m3
- density: 111mm to 169mm OD pipe, 80kgs/m3
- density: >170mm OD pipe, 120kgs/m3
- temperature resistance from -50 °C to +110 °C



Product Number	Outside Pipe Diameter	DN	Total Height	Total Width	Total Length	Material Thickness	Operating Temperature	Maximum Allowed Load Faz
Reference Letter	D	D	H	W	L	MT	CEL	F _{0,z}
Unit description	mm		mm	mm	mm	mm		N
8901030015	15		75	75	90	30.00	-50 - 110	120
8901030021	22	DN 15	81	81	90	30.00	-50 - 110	176
8901030027	28	DN 20	87	87	90	30.00	-50 - 110	224
8901030034	35	DN 25	94	94	90	30.00	-50 - 110	280
8901030042	42	DN 32	102	102	90	30.00	-50 - 110	337
8911030048	48	DN 40	108	108	90	30.00	-50 - 110	387
8911030054	54		114	114	90	30.00	-50 - 110	433
8911030060	60	DN 50	120	120	90	30.00	-50 - 110	483
8911030066	66		126	126	90	30.00	-50 - 110	529
8911030076	76	DN 65	136	136	90	30.00	-50 - 110	609
8911030089	89	DN 80	149	149	90	30.00	-50 - 110	712
8911030108	108		168	168	90	30.00	-50 - 110	865
8911030114	114	DN 100	174	174	90	30.00	-50 - 110	1,827
8911030133	133		193	193	90	30.00	-50 - 110	2,131
8911030140	141	DN 125	200	200	90	30.00	-50 - 110	2,239
8911230168	168	DN 150	228	228	125	30.00	-50 - 110	3,746
8911230219	219	DN 200	279	279	125	30.00	-50 - 110	11,468
8911230273	273	DN 250	333	333	125	30.00	-50 - 110	14,296
8911030063	63		123	123	90	30.00	-50 - 110	505
8911030104	104		164	164	90	30.00	-50 - 110	833
8911030110	110		170	170	90	30.00	-50 - 110	881
8911030129	129		189	189	90	30.00	-50 - 110	2,067
8911030154	154		214	214	90	30.00	-50 - 110	2,468
8911030160	160		220	220	90	30.00	-50 - 110	3,561
8912030323	323.8	DN 300	383	383	200	30.00	-50 - 110	27,139