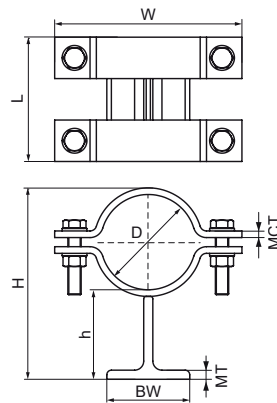
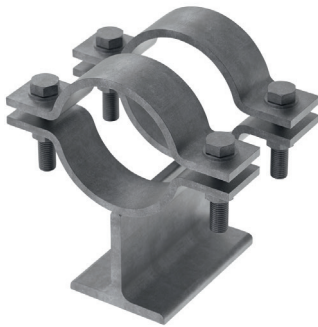


## Walraven Pipe Shoe T 2-clamp (hdg)

(E0573)

for steel pipes



### Features & benefits

- for light duty fixing of pipes and tubes to steel beams, profiles, brackets
- suitable for fixing points in case of rigid fixing
- suitable for sliding support
- bolts, nuts and washers are included
- T-Profile 100x100x11 EN 10055
- material: steel 1.0038 (S235JR)
- hot dip galvanized
- for operating temperatures up to +300 °C

Product Number	Outside Pipe Diameter	Pipe Diameter Imperial	DN	Total Height	Total Width	Total Length	Height	Base Width	Material Thickness	Maximum Clamp Thickness
Reference Letter	D	D	D	H	W	L	h	BW	MT	MCT
Unit description	mm	"		mm	mm	mm	mm	mm	mm	mm
466121025	25		DN 20	135	100	100	105	100	11.00	5
466121027	27	3/4	DN 20	137	100	100	105	100	11.00	5
466121030	30		DN 25	140	100	100	105	100	11.00	5
466121034	34	1	DN 25	144	102	100	105	100	11.00	5
466121038	38		DN 32	148	106	100	105	100	11.00	5
466121043	43	1 1/4	DN 32	153	112	100	105	100	11.00	5
466121045	45		DN 40	155	114	100	105	100	11.00	5
466121049	49	1 1/2	DN 40	159	118	100	105	100	11.00	5
466121057	57		DN 50	169	140	100	106	100	11.00	6
466121061	61	2	DN 50	173	144	100	106	100	11.00	6
466121077	77	2 1/2	DN 65	189	158	100	106	100	11.00	6
466121089	89	3	DN 80	201	172	100	106	100	11.00	6
466122108	108		DN 100	224	220	150	108	100	11.00	8
466122115	115	4	DN 100	231	226	150	108	100	11.00	8
466122140	140	5	DN 125	256	252	150	105	100	11.00	8
466122133	133		DN 125	249	244	150	108	100	11.00	8
466122159	159		DN 150	275	270	150	108	100	11.00	8
466122169	169	6	DN 150	285	280	150	108	100	11.00	8
466122216	216		DN 200	332	328	150	108	100	11.00	8
466122220	220	8	DN 200	336	332	150	108	100	11.00	8