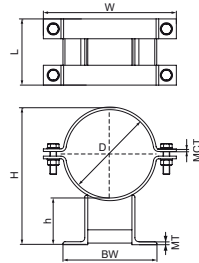


Walraven Pipe Shoe TT 2-clamp (hdg)

(E0576)

for steel pipes



Features & benefits

- for heavy duty fixing of pipes and tubes to steel beams, profiles, brackets
- suitable for fixing points in case of rigid fixing
- suitable for sliding support
- bolts, nuts and washers are included
- material: steel
- hot dip galvanized
- for operating temperatures up to +300 °C

Product Number	Outside Pipe Diameter	Pipe Diameter Imperial	DN	Total Height	Total Width	Total Length	Height	Base Width	Material Thickness	Maximum Clamp Thickness
<i>Reference Letter</i>	<i>D</i>	<i>D</i>	<i>D</i>	<i>H</i>	<i>W</i>	<i>L</i>	<i>h</i>	<i>BW</i>	<i>MT</i>	<i>MCT</i>
<i>Unit description</i>	<i>mm</i>	<i>"</i>		<i>mm</i>	<i>mm</i>	<i>mm</i>	<i>mm</i>	<i>mm</i>	<i>mm</i>	<i>mm</i>
466123267	267		DN 250	416	402	200	141	284	9.00	8
466123273	273	10	DN 250	422	408	200	141	287	9.00	8
466123318	318			464	452	200	138	309	9.00	8
466123324	324	12	DN 300	469	458	200	138	312	9.00	8
466123356	356	14	DN 350	499	492	200	135	328	9.00	8
466123368	368		DN 350	511	504	200	135	334	9.00	8
466123407	407	16	DN 400	551	570	200	134	354	9.00	10
466123419	419		DN 400	562	582	200	134	360	9.00	10
466123508	508	20	DN 500	695	672	200	177	454	12.00	10
466123521	521		DN 500	708	686	200	177	461	12.00	10
466123610	610	24	DN 600	791	790	200	170	505	12.00	10
466123711	711	28	DN 700	889	906	200	166	556	12.00	12
466123813	813	32	DN 800	984	1,010	200	159	607	12.00	12
466123914	914	36	DN 900	1,079	1,110	200	153	657	12.00	12
466123901	1,016	40	DN 1000	1,180	1,250	300	149	708	12.00	15