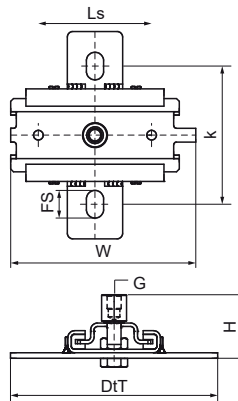
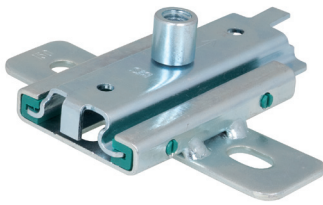


## Walraven Expansion Device 1-L

(E1024)

fixing with sliding assemblies



### Features & benefits

- single brackets for accommodation of pipe thermal expansion or contraction
- fix directly on the building structure or in combination with rail systems
- suitable for ceiling mounting (suspended) and floor mounting (standing mounted)
- a variety of connection possibilities, can be combined with all pipe clamps
- friction coefficient  $\mu = 0.18$ ; Sliding friction coefficient  $\mu = 0.14$
- material: metal parts made of steel 1.0332; plastic parts made of PA (polyamide) / PPS (polyphenylensulfid)
- zinc plated
- temperature resistance up to  $+120\text{ }^{\circ}\text{C}$ ; product 6663416 withstands up to  $+240\text{ }^{\circ}\text{C}$
- max. allowed load: standing =  $F_{a,z}$ ; suspended =  $F_{a,z} / 2$
- not suitable for pipes  $\geq \text{DN } 200$

| Product Number          | Connection Thread | Fixing Slot | Heart To Heart Distance | Slide Distance | Total Height | Total Width | Total Depth | Maximum Allowed Load $F_{a,z}$ | Maximum Allowed Load $F_{a,z} / 2$ |
|-------------------------|-------------------|-------------|-------------------------|----------------|--------------|-------------|-------------|--------------------------------|------------------------------------|
| <i>Reference Letter</i> | <i>G</i>          | <i>FS</i>   | <i>k</i>                | <i>Ls</i>      | <i>H</i>     | <i>W</i>    | <i>DtT</i>  | <i>F<sub>a,z</sub></i>         | <i>N</i>                           |
| <i>Unit description</i> |                   | <i>mm</i>   | <i>mm</i>               | <i>mm</i>      | <i>mm</i>    | <i>mm</i>   | <i>mm</i>   | <i>N</i>                       | <i>N</i>                           |
| 6663412                 | M10/M12           | 20x12,5     | 100                     | 80             | 52           | 134         | 150         | 2,300                          | 2,300                              |
| 6663416                 | M12/M16           | 20x12,5     | 157                     | 120            | 63           | 157         | 188         | 5,000                          | 9,000                              |