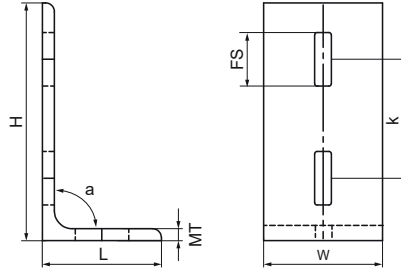
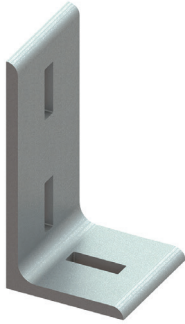


Walraven Maxx Profile Connector 90°

(H20516)

to make Maxx rail fabrications



Features & benefits

- 3-hole connector for Maxx profiles
- made of L-steel for extra stability
- material: steel S235JR
- hot dip galvanized

Product Number	For Rail Type	Angle	Total Height	Total Width	Total Length	Material Thickness	Fixing Slot	Heart To Heart Distance	Torque Moment For Installation	Maximum Allowed Load Faz	Maximum Allowed Load Fax
Reference Letter		a	H	W	L	MT	FS	k	$T_{inst.}$	$F_{a,z}$	$F_{a,x}$
Unit description		°	mm	mm	mm	mm	mm	mm	Nm	N	N
6681020	100x100, 100x120, 100x150	90	200	100	100	10.00	45x14	100	75	14,500	5,000
6681018	80x80	90	200	80	100	10.00	45x14	100	75	14,500	5,000