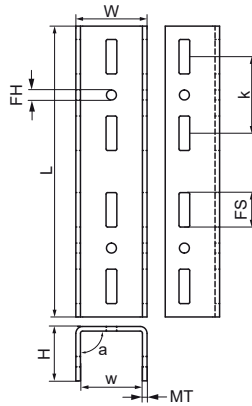
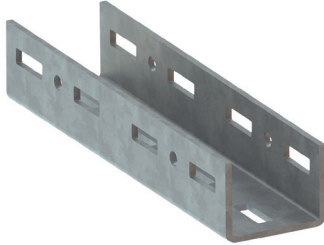


Walraven Maxx Linear Connector

(H20532)

to make Maxx rail fabrications



Features & benefits

- for linear connection of Maxx profiles type MX80
- advised to be used with min. 8 Maxx Hammerfix
- U-shape gives the opportunity to create one flat surface (for example to install big units on top of the Maxx profile)
- material: steel S235JR
- hot dip galvanized

Product Number	For Rail Type	Angle	Total Height	Total Width	Total Length	Material Thickness	Width	Fixing Hole	Fixing Slot	Heart To Heart Distance	Torque Moment For Installation	Maximum Allowed Load Fax
<i>Reference Letter</i>		<i>a</i>	<i>H</i>	<i>W</i>	<i>L</i>	<i>MT</i>	<i>w</i>	<i>FH</i>	<i>FS</i>	<i>k</i>	<i>T_{inst.}</i>	<i>F_{a,x}</i>
<i>Unit description</i>		°	mm	mm	mm	mm	mm	mm	mm	mm	Nm	N
6589318	80x80	90	71	93	380	6.00	81	13	45x14	100	75	8,250