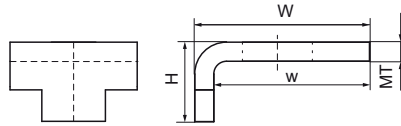
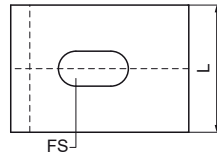
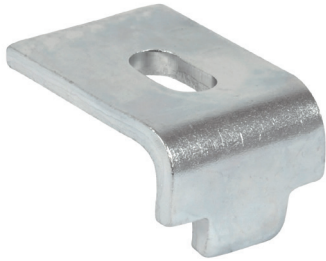


Walraven RapidStrut® Rail Beam Clamp

(H3615)

to connect Strut rails to steel beams



Features & benefits

- for a solid fixing to steel construction without the need for welding or drilling
- always use 2 beam clamps per fixing
- material: steel 1.0332
- zinc plated

Product Number	For Rail Type	Clamping Range	Total Height	Total Width	Total Length	Width	Material Thickness	Fixing Slot	Maximum Allowed Load Faz	Torque Moment For Installation
Reference Letter		CR	H	W	L	w	MT	FS	F _{a,z}	T _{inst.}
Unit description		mm	mm	mm	mm	mm	mm	mm	N	Nm
66583761	41x21, 41x41, 41x51, 41x62, 41x82	1 - 15	30	50	40	44	6.00	22x8	8,300	20