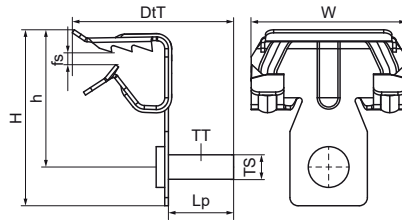
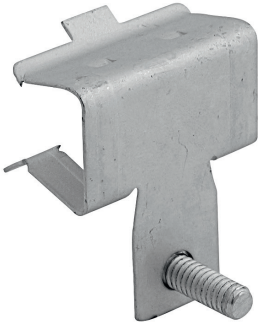


## Walraven Britclips® Beam Clip / Horizontal Stud M6 x 9

(J05145)

for flange



### Features & benefits

- for a solid fixing to steel construction without the need for welding or drilling
- with stud bolt M6 x 9 mm for fixing of clamp, conduit junction box, etc.
- material: spring steel (type CS70)
- surface treatment: Delta-Tone 9000 (480 hours)

Product Number	Code	For flange size	Height	Thread Size	Thread Type	Stud Length	Total Height	Total Width	Total Depth	Maximum Allowed Load Faz
<i>Reference Letter</i>		<i>fs</i>	<i>h</i>	<i>TS</i>	<i>TT</i>	<i>Lp</i>	<i>H</i>	<i>W</i>	<i>D+T</i>	<i>F<sub>0,z</sub></i>
<i>Unit description</i>		<i>mm</i>	<i>mm</i>			<i>mm</i>	<i>mm</i>	<i>mm</i>	<i>mm</i>	<i>N</i>
EM50520604	BC250-M69SH	2 - 4	20	M6	Metric	9	27	28	24	450
EM50520609	BC500-M69SH	4 - 8	21	M6	Metric	9	39	38	32	450
EM50520616	BC750-M69SH	8 - 14	30	M6	Metric	9	41	38	32	450
EM50520620	BC1000-M69SH	14 - 20	32	M6	Metric	9	47	38	32	450
EM50520630	HN50L	23 - 30	50	M6	Metric	9	56	38	32	450