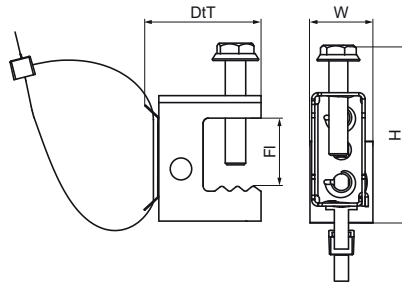
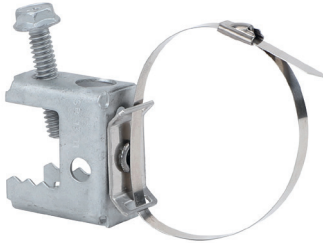


Walraven Britclips® Master Clamp / Cable Tie (Metal)

(J15165)

for flange



Features & benefits

- for a solid fixing to steel construction without the need for welding or drilling
- various fixing possibilities to clamp (horizontal and vertical)
- with metal saddle for cable tie attachment
- material: clip made of spring steel (type CS70); saddle made of stainless steel
- clip: surface treatment Delta-Tone 9000 (480 hours)

Product Number	Flange	Total Height	Total Width	Total Depth
Reference Letter	Fl	H	W	DtT
Unit description	mm	mm	mm	mm
53321017	2-18	36	18	36