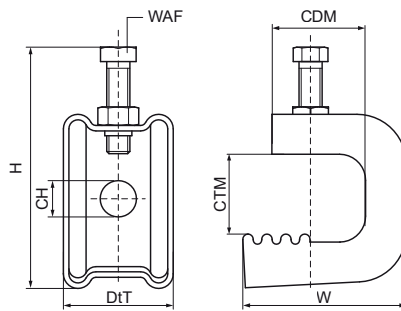
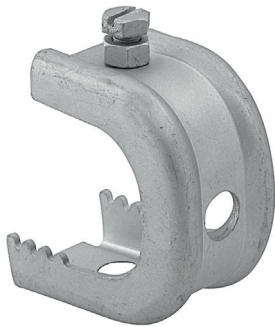


Walraven Beam Clamp Model O

(K2015)

for clamping on beam flange



Features & benefits

- for a solid fixing to steel construction without the need for welding or drilling
- up to flange thickness 45 mm
- with hole Ø 14 mm for fixing of Walraven IC-clamp, stud bolt or S-Hook
- with serration for increased security
- material: steel
- surface treatment: zinc flake coated

Product Number	Maximum Clamping Thickness	Maximum Clamping Depth	Total Height	Total Width	Total Depth	Connection Hole	Thread Size	Width Across Flats	Maximum Allowed Load Faz
Reference Letter	CTM	CDM	H	W	DtT	CH	TS	WAF	F _{0,z}
Unit description	mm	mm	mm	mm	mm	mm		mm	N
6077020	18	20	84	45	41	14	-	13	1,100
6077030	30	30	100	60	41	14	-	13	1,200
6077045	45	35	110	70	41	14	-	13	1,300